

Christ Connections



CHRIST
providence



CHRIST
south



CHRIST
concord



CHRIST
online

march/april 2021

CHRIST PROVIDENCE

9 a.m. **Traditional Worship**
11 a.m. **Contemporary Worship**
10 a.m. **Adult Sunday Classes**
4519 Providence Rd., Charlotte

CHRIST SOUTH

10 a.m. **Online Family Worship**
4 p.m. **Worship at Threshold**
3501 Antioch Church Rd., Weddington

CHRIST CONCORD

10 a.m. **Multi-Generational
Modern Worship**
240 Pitts School Rd. NW, Concord



For links to livestream services,
weekly online classes, bulletins,
ChristKidsTV and more:

christelca.org/online

CONNECT ON SOCIAL MEDIA



**Masks, social distancing and
RSVP are currently required
for in-person worship. Walk-ins
are welcome as long as max
capacities allow for each campus.*
christelca.org/rsvp

Holy Week &

Easter Sunday



CHRIST
providence



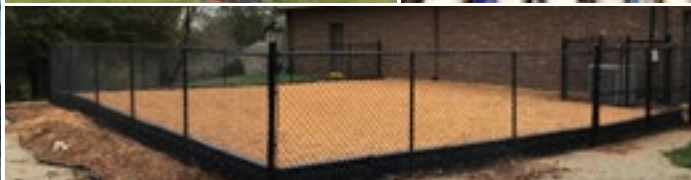
CHRIST
concord



CHRIST
south



CHRIST
online





from the Senior Pastor

What Does a Post Covid Church Look Like?

Unfortunately, no one really knows but we hope to find out.

For five weeks, Pastor Drew and I met with a group of about 25 people at our Wednesdays Together Class to ask this question, read through articles, explore scripture and chart a new course in this post-Covid world. I can tell you, it wasn't crystal clear, but several broad principles stood out:

Online Church is not going away. Churches that are waiting for this silly online worship to end and get back to sitting in a pew on Sunday are going to miss the boat post-Covid. From worship to meetings to classes, we need to make the online experience authentic, engaging and legitimate.

The Mission is clear. We exist not to get people to attend a building on Sunday morning, or to get people on a membership roll, or to prop up a brick and mortar institution. We exist to glorify God and to transform people with an authentic relationship with Jesus.

Community is essential. Now more than ever, people are craving community. Perhaps once taken for granted, this essential element of our human existence has been stifled for too long. In all that we do, there needs to be the building up of relationships through community.

Agility is necessary. Churches that are quick on their feet and can pivot in a short period of time will thrive in post-Covid. We say, "The cement is still wet!" We need to act quickly and often to continue to shape what is to come.

With these overarching principles, we identified some action items for Christ Lutheran:

Technology, technology, technology. We need to shift resources and attention to improving our technology constantly to make our online and in-person experiences vibrant, authentic and engaging.

Mission/Vision. Leadership is using this time to re-envision the overall mission/vision of Christ Lutheran as well as the unique strategies of each campus.

Christ Home. Some people will choose to continue to worship online from home either because of family schedules, work, distance from church, or whatever. Doesn't matter. We would like to recruit about 30-40 families/individuals who will open up their homes each week to about 6-12 unchurched family and friends for fellowship, worship and study. This could be Sunday mornings, Tuesday nights, Saturday afternoons... with on-demand worship, the time no longer matters.

"The times, they are a-changin'." And Christ Lutheran needs to be at the tip of this spear, piercing into the future with bold faithfulness not only for our congregation, but to point the direction for others to follow. Come and see! Let's figure this out together.

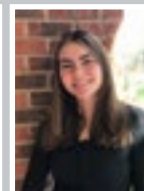
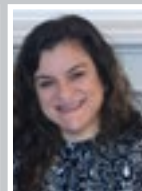
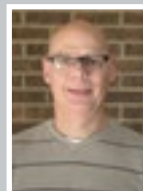
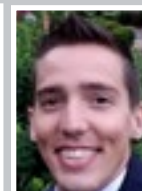
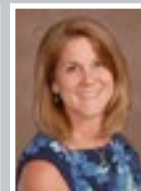
Peace, Pastor Scott



MEET THE 2021 CHURCH COUNCIL

PRESIDENT Amy Kochan **VICE PRESIDENT** Lane Goode
TREASURER Kelli Addison **SECRETARY** Thomas Sallach

Dean Emmans • Christina Masters • Corey Ford • Ralf Meyer
Melissa Topinka • Hannah Webster • Chad Mohn
Eric Trosch • Mark Ficken • LuAnn Martinson





CHRIST LUTHERAN
providence | south | concord | online

CONGREGATIONAL MEETING

SUNDAY, MARCH 7 • 12:15p
at Christ Providence - Sanctuary

Re: a contract for the sale of the acre lot
across the street from the office building.

RSVP in REALM to Attend in Person*
or Watch Online: christelca.org/online

*members intending to vote must attend in person

CHRIST LUTHERAN
cornerstone
gifts

HOP ON IN
FOR A TASTE OF SPRING!

NOW OPEN
Sundays after service
Mon-Wed 10a-1p

AVAILABLE FOR PRIVATE
SHOPPING ANY DAY (call
church office to schedule)

Bible Study: The Gospel of John

Wednesdays • 6:00 - 7:30 p.m.

at Christ Providence (Fellowship Hall)
-or- online via Zoom

Join pastors Scott and Drew for a Lenten
bible study on the Gospel of John.
(RSVP required for in person)

**RSVP in REALM -or- find Zoom
link online at christelca.org/online**

ADULT CLASS

WOMEN MAKING CONNECTIONS

meets Wednesdays at 6:15p (on Zoom)

Join us for 40 days with Mark and Luke as
we take these 2 books of the Bible slow
throughout this Lenten season.

Find Zoom link on Christ Online
christelca.org/online



ADULT CLASS LENTEN STUDY
FAITH FELLOWSHIP:
THE PASSION PLAY
Sundays • 10 a.m. on Zoom

Join this 6-week video
series by Pastor & author
Rob Fuquay as he explores
the history & tradition of
the famous Passion Play
performed each decade
in Germany & how it
defines believers today.

christelca.org/online



Land for Sale

by **PASTOR SCOTT**

About four years ago when we bought that acre property across the street from the church office, we had no idea what we wanted to do with it. During this interim period, the Garden Ministry has "grown" that space into life-giving vegetables, feeding the community with (literally) over a ton of produce. Job well done.

Today, we believe God has given us a vision for its use- to be sold with the proceeds used for the building of the worship/ community building at Christ South. Fortunately, this land has seen an incredible increase in its value, so whatever you gave towards the original purchase has now grown over 50%.

Council has decided to put the land up for sale with the contingency that any sale must be approved by the members of Christ Lutheran at a congregational meeting. With a contract currently in place, a meeting for vote is scheduled for March 7th at 12:15 p.m. in the sanctuary at Christ Providence. Members intending to vote must do so in person. Click the ad at top left to RSVP, or watch the proceedings online at christelca.org/online.

Endowment Funds at Work

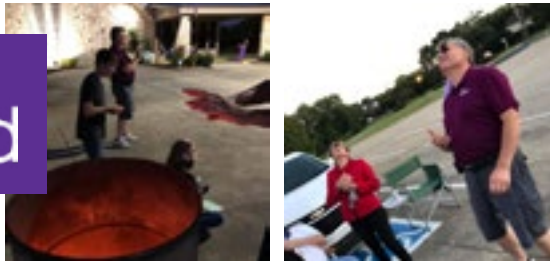
Christ Lutheran (CLC) has two Endowment Funds, and the proceeds from those Funds are allocated each year. Fund I supports our various Outreach initiatives such as Crisis Assistance, A Roof Above, McClintock Partners in Education (McPIE), the ELCA synod and other recipients chosen by the Benevolence Committee. For the year ending December 31, 2020, a distribution of \$27,756 was allocated.

Fund II is a general purpose fund allocated by Church Council. Recently, Council has allocated \$10,000 to the mobile food ministry that our Chef, Mike Wallace, is spearheading to feed people in their times of need. He is potentially going to name the ministry "Stone Soup." CLC has been experimenting some up to this point by feeding folks in "tent city" in uptown Charlotte, assisting the Charlotte Rescue Mission with some meals, feeding volunteers at Bojangles Coliseum vaccination clinics and also providing meals to a couple of ministries associated with Cooperative Christian Ministries in Cabarrus County. One of the ministries is Kimball Lutheran Church and the other is My Father's House. Mike and his wife Alicia also provided approximately 100 meals to an Atrium Health facility. All of these efforts are making a wonderful impact to those who are receiving the meals.

Mike continues to develop thoughts and ideas pertaining to this new mobile food ministry and ultimately wants to be able to provide spiritual and physical nourishment to those the ministry will engage. The funds allocated will be utilized to purchase equipment, supplies and food to help get "Stone Soup" started. The remaining dollars from the allocation have not been designated as of yet. Thanks again to all who have supported the Endowment Funds which together now total over \$1 million and continue to impact many lives.



by PASTOR TENNY



First Fridays

First Fridays will resume in May! Look for the fun and creative ways that we'll be safely gathering at Christ Concord to enjoy each other's company the First Friday in May!

Renovations and Updates

We are using this time of COVID to do some needed renovations on the interior of the church building at Concord. Most of the interior has already been painted and new lighting installed. New office workstations are getting a lot of use. Work continues on the storage/work room/Sacristy. Old cabinets have been removed, and new cabinets are waiting in boxes, to be installed after painting and electrical work is completed. Next up for renovation will be the Pastor's Study, Kitchen, and Fellowship Hall.

New landscaping plans will be implemented over the next few weeks to improve the "curb appeal" of the property. We are waiting on warmer weather to stain and install the large wooden "Backyard Adventures" playground. The pad, retainer and fencing are completed and ready to receive the equipment and benches.



Community Outreach

We know that many people are dealing with food insecurity. So, we continually collect and deliver food to the food pantry at Cooperative Christian Ministry to help keep their shelves stocked. The blue bin outside our front door is always ready to receive more donations!

CHRIST concord
Wednesdays During Lent
Feb. 24 - March 31
 12 p.m.
 Online Service &
 Drive-Up Communion
WORSHIP ONLINE on FACEBOOK-LIVE

CHRIST concord
 HELP ADORN THE SANCTUARY WITH
Altar Flowers
SIGNUP ON REALM
 Community>Events>Concord Altar Flowers

RESUMES IN MAY!
first
fridays
family
fellowship
CHRIST concord
 MEETS THE
FIRST FRIDAY
OF EACH MONTH
6:30 - 8:00 p.m.
at Christ Concord
Check Out
Weekly E-News
for Updates

Drive-Up Communion
CHRIST providence **CHRIST concord**
 After attending worship online at any service, please come to the parking lot where the pastors (wearing gloves and masks) will offer a prayer and distribute communion to all.

10 WARNING SIGNS OF ALZHEIMER'S
 hosted by Providence Baptist Church
Sunday, March 14 • 6:30 p.m.
 Join team leaders from the Alzheimer's Association® for a FREE virtual event designed to help family members recognize symptoms in the early stages of the disease. For info, email bkendrick@providencebc.org.
Register: tinyurl.com/PBCMar1410Signs



Architectural renderings of multi-use "Little Barn" and overall site plan for Phase I of Christ South development.

What's Happening at Christ South?

by PASTOR MATT

It goes without saying that this past year has been particularly challenging for all of the Christ Lutheran church campuses. This March marks one year since we had to move our services completely online because of the pandemic, and while we have done a few outdoor worship services since the fall, resuming indoor worship at Polo Ridge Elementary School is not an option. We have plenty of land at the Old Dairy Farm, but outdoor worship will always be a challenge due to weather and temperature. We have missed seeing each other, worshipping together and connecting with people the way we used to.

After meeting with Christ South families and church leadership, we have given a lot of thought and prayer to how we adapt to this situation and bring us back together safely as a community. I am happy to be able to share with you the three-part plan that we have developed.

1. Christ South will build a permanent church building at the Old Dairy Farm. The plan right now is to break ground later this fall and have the new space ready for worship in 2022. There are, of course, many things that have to happen between now and then and those details will be shared with everyone soon.
2. Christ South will resume in-person worship on March 7 at a new location and time. Threshold Church has graciously agreed to allow us to use their worship space on Sundays at 4 p.m. We will wear masks, check temperatures at the door and the seating will be socially distanced. We will continue to offer online worship at 10 a.m. for those who are not ready to worship in person. Our plan is to use this space until our worship center is completed on the farm. Please check the website and social media for location details and sign-up links.



3. Christ South will use the Old Dairy Farm for safe social gatherings and community events. As we plan for our permanent worship space, it is important to use our land as much as possible to connect with each other. As the weather improves, we will host events on the farm to allow families to connect. Please be on the lookout for upcoming events.

Thank you to everyone who put so much time and effort into this planning process. We are excited to see you again and to once again worship together.

For Ash Wednesday, we hosted drive-through ashes at the farm. It was so good to see our families again. Our kids received goody bags and I was able to share a brief moment with many of you. While it was different from past years, there was something special about a short time of normalcy and the hope of what is to come.

As we move toward Holy Week, we are planning a special Easter outdoor sunrise service at 7 a.m., and outdoor worship at 10 a.m. on the farm, in person and streaming online. We will also host indoor, in-person worship at 4 p.m. at Threshold. In case of weather, we will move our outdoor services online only.

Please keep us in your prayers as we continue to navigate these uncharted waters and figure out what the "new normal" looks like. Our hope is that as the vaccine becomes widespread and case numbers continue to decline, we will once again be able to worship the way we did before. I am humbled and heartened by the continued support, patience and resilience of the Christ South community.

Wednesdays During Lent

February 24 - March 31

12p Providence Wednesday Lenten Service

12p Concord Online Wednesday Lenten Service**
& Drive-Up Communion*

Lent



SUNDAY SERMON SERIES

Heartbreaks

March 7 • Examining the MIND

Romans 12:1-3 • 2 Philippians 4:5-6 • John 2:13-22

In our gospel, we hear that Jesus was full of zeal. How often are we full of zeal for the Lord? Is our mental energy always focused on God's plan and priorities? How does your zeal put God's interests first? In what ways is Jesus renewing our minds during Lent?

March 14 • Examining the STRENGTH

2 Corinthians 12:7-10 • 1 Peter 5:9-10 • John 3:14-21

The only way that a person can really show their strength is through action - actions that either build and encourage... or cause brokenness. How have you

had your heart broken through other's actions? How have you broken others' hearts through your actions? Jesus action was to save all creation, through His faithfulness, His strength. Where do we find strength to build relationships rather than break them apart?

March 21 • Examining the NEIGHBOR

Philippians 2:1-11 • Mark 6:30-44 • John 12:27

How often do we turn off the news when it's difficult to hear? How often do we scroll past a social media post about people in need so we don't have to deal with it? It's so much easier to ignore those in need than face them. How might we be called to push through our own doubts, worries or perceived scarcity in order to reach out to others and give them the Bread of Life to eat?

WEDNESDAY SERMON SERIES

The Messy Middle

March 3 • Prayer and Action

1 Thessalonians 5:16-24 • Luke 10:38-42

A gospel story of two sisters. Martha is the sister, defined by action. Mary sits at Jesus feet and is praised by Christ. Does this mean prayer and contemplation is better than action? Or is it both/and?

March 10 • Bound and Free

Psalms 51:1-12, Mark 2:13-17

In his letter to the Romans, St. Paul talks about being unable to do the good he wants to do... and at the same time doing the very things he knows God has commanded us not to do. When we talk about 'free will,' is it simply a matter of trying your best? Clearly, freedom has to come from God and not from our efforts. Who will rescue us from this body of sin?

March 17 • Control and Surrender

Romans 8:28-32 • Luke 12:22-32

Few things bring a sense of comfort to us more than feeling like we are in control. While we need to

exercise responsibility, life teaches us that complete control is often a myth. Faith asks us to also surrender to the truth that God is ultimately in control and works all things for good.

March 24 • Now and Not Yet

2 Peter 3:8-13 • Matthew 17:1-9

The Church is already saved and part of the kingdom of God. In the gospel preached and the sacraments administered, Jesus is truly present in our community. At the same time, we long for God's kingdom to come on earth as it is in heaven. We live in the tension of now... and not yet.

March 31 • Cross and Glory

1 Corinthians 2:1-5 • Luke 22:24-30

After Peter confesses that Jesus is the Messiah, Jesus responds that those who follow him must deny themselves and take up the cross. It hardly sounds like a path anybody would choose for success. But the tension of Lent is that by denying self, we find real joy. By picking up our cross behind Christ, we gain the only real life and glory worth having: His.





Holy Week & Easter Sunday

*SERVICE IS IN PERSON ONLY

**SERVICE IS ONLINE ONLY

Palm Sunday • March 28

- 9a Providence Traditional Worship
- 10a Concord Modern Worship
- 10a South Casual Family Worship
- 11a Prov. Contemporary Worship
- 4p South Worship at Threshold*

Maundy Thursday • April 1

- 10a Providence Children's Service
- 12p Providence Worship
- 6p South Zoom Dinner Worship**
- 6p Concord Zoom Family Dinner**
- 7p Concord Online Worship**
- 7p Providence Worship

Good Friday • April 2

- 10a Providence Children's Service
- 12p Concord Online Service**
& Drive-Up Communion*
- 12p Providence Seven Last Words
- 6p South Online Candlelight Worship**
- 7p Concord Worship
- 7p Providence Tenebrae Service

Easter Sunday • April 4

- 7a South Outdoor Sunrise Service*
- 8a Providence SonRise Service
- 8a Concord Outdoor Worship*
- 9a Providence Traditional Worship
- 10a Concord Easter Worship
- 10a Providence Family Service
- 10a South Outdoor Worship
- 11a Prov. Contemporary Worship
- 4p South Easter Worship at Threshold*



All in-person services currently require an RSVP. Registrations open March 22.
Please follow current social distancing guidelines & wear a face mask while visiting any of our campuses.

WATCH ONLINE -or- RSVP FOR IN-PERSON WORSHIP

 **christelca.org**

Faith Ministry

by PASTOR MELODY

International mission trips can be a life changing experience! That's why we are partnering with Myers Park United Methodist and Faith Ministry to start opportunities for our youth and adults of Christ Lutheran to experience community service on a global scale.

Myers Park United Methodist Church takes an annual mission trip through Faith Ministry. Based in Reynosa, Mexico, Faith Ministry works to provide safe and secure housing for their neighbors, promotes health and wellness through their community clinic, provides scholarships for further education and empowerment of children, and is the spiritual hub of the community. Myers Park United Methodist Church has been working with Faith Ministry for many years, and during this time they have seen Faith Ministry spread the love of Christ on the border of Mexico.

Why Faith Ministry?

- Establish a relationship with a community where we can grow and learn together.
- Build an ongoing partnership with brothers and sisters in Christ in another country.
- Develop a shared ministry with Myers Park United Methodist.
- Provide opportunities for cross-generational engagement.
- Open the congregation's heart and eyes to the cultural diversity and needs of the world.
- Through serving others, we grow in faith and our relationship with Christ.

Doesn't this sound amazing?! The bad news is that we can't start participating in a full mission trip until 2022. But we can take all the initial steps this year to hit the ground running for next summer. During the month of March we are fundraising to lay the foundation for this ministry.

Fundraising would help our new ministry in several ways. Even though Faith Ministry isn't providing any mission trips this summer, they still need financial assistance building houses with local community help. Part of the funds raised would sponsor a couple houses this year. Developing a mission trip fund also helps to provide any deposits and cover any future overages that we might have. Finally, we don't want to send a group to a foreign country without seeing it firsthand. In 2021, we'll send a small group to Mexico on a fact-finding trip so we can be well prepared for 2022. We need your help to get this ministry started!!

Holy Week Family Worship Services

by PASTOR MELODY

We're dedicated to partnering with parents to lead children to become fully devoted followers of Christ. The most important time we can share our faith with our children is during Holy Week when we walk through the story of Jesus, the Last Supper, his death and resurrection. This Holy Week we're providing three opportunities for families with children to worship at the Providence Campus, with a 10 a.m. service on Maundy Thursday, Good Friday and Easter Sunday. These services will engage the children on their age level to help them get a deeper understanding of Holy Week.

Come join us! All services will be livestreamed online and open for in person worship (*RSVP, masks and social distancing required*). Just go to the homepage of our [website](#) and choose either "Worship Online" or "RSVP for In-Person Worship" to get connected.

Affirm: Life
CONFIRMATION MINI RETREAT
Sunday, March 7 • 1-3 p.m.
 at Christ Providence OR online!
 Middle schoolers - join us in person or online to reconnect with friends over games, a service project & a Bible activity.
More Info & Register on REALM

 **CHRIST LUTHERAN WEEK**
 at Lutheridge **JULY 18-24**
 As our middle schoolers are attending Kairos Confirmation Camp this summer, consider sending the rest of the kids, too! Go to the Novusway website and see what's available July 18-24. Programs are listed by different age groups for 1st-12th graders.
 Email Caroline for info (ctargonski@christelca.org)
 -or- explore and register at:
lutheridge.org/summer-camps

Pajamas, Pigs & Pancakes Respite 
Saturday, March 20, 9a - 11a
 at Thrive Day School (315 Reid Dairy Rd., Waxhaw)
 All children with special needs & their siblings under 12 are invited to enjoy a morning of fun while parents enjoy a time of respite. For questions, email Caroline Rose at targonski@huntington.edu.
To register: evite.me/2WFZwvbeaz


Save the Date VBS
Vacation Bible School
June 14-18, 2021
 Virtual with some in-person opportunities
REGISTRATION WILL OPEN AFTER EASTER

 *Baptismal Class*
Sunday, March 14
12:15 p.m. on Zoom
 For info, email Jane at jsatterfield@christelca.org
 Find Zoom link at christelca.org/online

Summer Camp

by CAROLINE TARGONSKI



As you're starting to pull out your calendars and make your summer plans, make sure you book some time for summer camp! Camp Agape and Camp Lutheridge are wonderful camp options in the North Carolina area. Many of our middle school youth will be heading to Lutheridge this summer for Kairos confirmation camp on the week of July 18-24, but they have many other fun programs and weeks to choose from for all age groups (they even have camps for grandparents!). Overnight summer camps are a time for kids to play in nature, make new friends, try new things and experience God's love in a whole new way. So be sure to check out Camp Agape and Lutheridge and all they have to offer!

For info, email Pastor Melody (msimpkins@christelca.org) or explore and register at lutheridge.org/summer-camps.

You can also check out their promo video on YouTube! Just click or type in your browser: youtu.be/ptlgymQM5Vk.



SOCCERCLINIC
FOR KIDS AGES 5-8

March 14-21-28 & April 11
2-3 p.m. at Christ South (4 sessions)

Learn some basics at this clinic organized by Owen Runge, a sophomore on the Myers Park High School JV soccer team.

Parent must stay with child each session; bring a soccer ball; masks required.

FREE! BUT SPACE IS LIMITED
REGISTER ON REALM



Disability Inclusion Efforts

by CAROLINE ROSE TARGONSKI

Did you know that research estimates between 50-80% of families affected by disability do not regularly attend church?

Special needs families often do not feel welcomed enough or have the needed support to participate in church, and Christ Lutheran is passionate about intentionally welcoming and supporting these families.

Our church is a place where ALL God's children are welcomed and valued, including those with disabilities and special needs. I have been a member of Christ Providence for 13 years, and I am working with the church as I complete my 14-week capstone project for my doctorate of occupational therapy. My project's mission is to increase disability awareness and help our church develop an inclusive special needs ministry that supports the occupations of religious and social participation for people of all abilities. I am working closely with Thrive Day School, a special needs preschool and home school co-op program affiliated with Christ Lutheran and located at The Old Dairy Farm.

Thrive is truly "thriving," and it is incredible to see God at work – the preschool has grown from working with just one student two years ago to 32 kids in total, including the home school program! I am working at the school every morning and learning from the amazing directors, Laura Scott and Jessica Bunting, and the teachers and therapists to build a relationship with these special needs families to learn how our church can support their needs.

Christ Lutheran is taking a closer look at how we can be intentionally more welcoming, supportive and inclusive towards those with disabilities. I am having conversations with Christ Lutheran's Integration Team and adding disability awareness to the conversation of diversity and inclusion. We are working towards creating sensory-friendly spaces and activities that support children's sensory needs. Our staff and leadership have participated in training to learn about disability and strategies for working alongside people with special needs, and we will offer a similar training to all church volunteers. We are exploring ways to make the church experience more accessible for those with physical or developmental disabilities.

If you or someone in your family is affected by disability, we would love to learn how our church can better bless and support you by completing the survey linked to the QR code below. Thrive is hosting a respite event for any families affected by disability in our community with children 12 or younger on Sat., March 20th from 9-11 a.m. at The Old Dairy Farm.

If you are interested in signing up for our respite event or learning more about our accessibility survey and inclusion efforts, please contact Caroline Rose Targonski (targonskic@huntington.edu) or Laura Scott (lscott@thrivedayschool.com).



CHRIST LUTHERAN
ACCESSIBILITY SURVEY



<https://docs.google.com/forms/d/e/1FAIpQLScAVI28xXUVI8eI7NdLcIJ-qeeQypVX5ddjyVHN0-t8oEF4Q/viewform>



SUPPORTING FAMILIES & ENGAGING STUDENTS: Groceries & STEAM Challenges

For the past year, McClintock Partners in Education (McPIE) has been pivoting to continue supporting McClintock Middle School families and engaging students. What began as 20 grocery bags a week has now grown to 140 bags of groceries distributed to McClintock families each week. We support this effort through generous donations to the Feed A Family Fund, donations of food and grant funding.

Each Wednesday, families come to McClintock to pick up their student's meal bundle from Charlotte-Mecklenburg Schools (CMS). While there, families in need may also grab a bag of groceries from McPIE. If their student is also registered for the McPIE Challenge Club, they will also receive their supplies for that week's challenge. Challenges have been a great way for students to continue learning while also participating in a fun activity at home.

The Spring session of McPIE's Family Night Challenge Club kicked off on February 3rd! This semester, students will explore 3 areas of STEAM: Tinker Time, Art (the "A" in STEAM), and Outdoor Adventure. Over the past few weeks, students have investigated and constructed rubber band racers, gears and hydraulic claws. Students who complete the challenge, post their final products on FlipGrid and participate in a Friday Zoom party to discuss learned science concepts are eligible to earn incentive prizes throughout the semester!

Parents and family members are also eligible to join in our virtual adult classes. Thanks to our wonderful team of leaders, parents can choose to participate in Getting Ahead, Women's Journey, English as a Second Language (ESL) and our new class, Let's Race. These classes meet via Zoom on Monday or Tuesday evenings.

In Getting Ahead, participants gain a better understanding of the language and patterns of poverty, middle and wealth classes while building the resources needed for a better life. Women's Journey is truly all about healing and restoration for the woman. ESL is for those who are interested in working on their English language and conversation skills. Let's Race includes informal conversations with individuals with different life experience. The goal is to listen, learn and improve communications between people of different races and ethnic backgrounds.

School is Back in Session: McClintock Needs Wipes

Middle school students are back in the school building! It has been almost a full year since students have roamed the halls of McClintock. To help make this a smooth and safe transition, McClintock is asking for donations of disinfecting wipes. If you grab an extra pack while you are out, drop them off at the Outreach Office!

Music for Ghana

by KENDALL FICKEN

I am a musician and a junior at Charlotte Christian High School. I have been playing the violin and studying music since the age of five, and I believe learning music has been a critical part of my education. From learning how to rhythmically count, learning difficult techniques, and learning how to practice and strive for excellence, music has broadened my abilities in school and has helped me learn and be a better student. My passion for music has created a desire to extend these benefits of music education to other students and communities.

About Ghana

After learning about a school in a small community in Eastern Ghana who was in need of a music department for their students, I immediately wanted to help. Through my study group collaboration with David Ntim, my classmate, who had participated in mission work in Ghana, I learned about the opportunities for international mission work at the Pepease Presbyterian Basic Schools in Ghana, which included a desire for a music department for their students. I became educated on the state of music education of the school through Rev. Kennedy Twum-Barimah, Pastor and Direct Minister of the Presbyterian Church of Ghana in Pepease-Kwahu.

Pepease-Kwahu is a town on the Kwahu Mountain with an elevation of about 1700 feet and located in the Kwahu East District in the Eastern Region of Ghana. The Presbyterian Church of Ghana, Emmanuel Congregation, Pepease-Kwahu, and the Presbyterian Basic School at Pepease has a need for a comprehensive creative arts program for primary (elementary) and junior high (middle) school students and some basic instruments that the kids can learn how to play. My dream is to not only bring a supply of instruments to this school, but also build a music classroom and storage room in order to create an environment where learning music is possible.



How You Can Help

The first step in this goal is to provide instruments for the kids so they can start learning basic music skills. Any donations of old instruments would be greatly appreciated, from old keyboards to maybe the quarter size violin you have from your children's lessons years before. I have put together an Amazon wish list of the instruments needed if you don't have any old instruments but would like to donate new instruments. The link can be found on my website.

Second, a few locally made instruments are needed for the students to learn traditional ghanian music, so any direct donations would be greatly appreciated in order to purchase these local instruments. If you would like to donate old instruments or donate money in order to purchase traditional Ghanian instruments, please contact me at kendallficken@icloud.com.

Lastly, my goal is to build a Center for Creative Arts building at the Pepease-Presbyterian School. If you would like to donate towards the building process of this center, a Go-Fund-Me page is linked on my website. Thank you so much for your support in my dream to grow God's kingdom musically and help me provide the opportunity for these kids to grow and learn.

**TO DONATE OR
FOR MORE INFO**

Visit my website
musicforghana.org

or email
kendallficken@icloud.com





CHRISTLUTHERAN
providence | south | concord | online

4519 Providence Road · Charlotte, NC 28226

Non-Profit Org.

U.S. Postage

PAID

Charlotte, NC

Permit No. 1741

return service requested

CHRIST LUTHERAN'S BI-MONTHLY NEWSLETTER

Christ Connections



march/april 2021

Scott Suskovic · Senior Pastor
Drew Goodson · Pastor, Evangelism & Adult Ministries
Melody Simpkins · Pastor, Family Ministries
Matt Simpkins · Pastor, Christ South
Tennyson Shifley · Pastor, Christ Concord
Amy Daniels · Director of Outreach
Mark Glaeser · Minister of Music
Gregg Huether · Director of Property and Finance

JOIN THE NEWSLETTER MAILING LIST!

E-mail Connie Kramer at ckramer@christelca.org and let her know you'd like a copy of Christ Connections mailed to your house. You can also view the newsletter through the link on E-news or online at christelca.org/latest-news.

To submit a story or news item,
Fill out a Communications Project Request Form,
found online at form.jotform.com/80496362784165.

LOOKING FOR NOAH'S HELPERS

Are you looking for a simple, yet meaningful way to share God's love in 2021?

Become a Noah's Helper and help us stay connected as a church family, especially by reaching out to our senior members.

JOIN GROUP IN REALM FOR UPDATES
(Community>Find Groups>Caring)

CHAT TEAM VOLUNTEERS NEEDED

Volunteers needed to help with live-stream worship services on Facebook. Duties include welcoming online viewers & sharing important links during a Sunday service, plus other special services as needed.



If interested, email Alexis:
awilliams@christelca.org