

Christ Connections



CHRIST
providence



CHRIST
south



CHRIST
concord



CHRIST
online

may/june 2021

CHRIST PROVIDENCE

Current Schedule:

9 a.m. **Traditional Worship**
11 a.m. **Contemporary Worship**
10 a.m. **Adult Sunday Classes**

Summer Schedule Starts May 30:

9 a.m. **Traditional Worship**
10:45 a.m. **Contemporary Worship**
4519 Providence Rd., Charlotte

CHRIST SOUTH

10 a.m. **Online Family Worship**
4 p.m. **Worship at Threshold**
3501 Antioch Church Rd., Weddington

CHRIST CONCORD

10 a.m. **Multi-Generational
Modern Worship**
240 Pitts School Rd. NW, Concord



For links to live-stream services,
upcoming virtual events, bulletins,
ChristKidsTV and more:
christelca.org/online

CONNECT ON SOCIAL MEDIA



COVID UPDATE

Beginning May 2, we will no longer require worship attendees to pre-register. We will still be masked and sit six feet apart, but registration is not required.



CONGRATULATIONS TO OUR
High School Graduates
• CLASS OF 2021 •





PASTOR SCOTT SUSKOVIC

from the Senior Pastor



Good Soil Building Campaign for Christ South

When we called Pastor Matt to lead our Christ South campus in 2016, we knew that one day we would buy land.

When we bought 13 acres of land on Rea Road in 2019, we knew that one day we would build.

Now is that time. Now we have Good Soil.

We are in the process of finalizing the architectural drawings for a worship space that will also be used for community gatherings. Don't think stained glass, a steeple and an organ. Think more barn-like to fit the bucolic setting. Think more pavilion to gather a community. Think more indoor/outdoor to embrace God's beauty.

Once these plans are completed sometime in June, we will get the final pricing from our builder, Edifice. We have a long-standing relationship with Edifice as they built our Ministry Center as well as our Worship Center. They are high-quality builders with high integrity and excellent customer service.

Timeline

- May– congregational meeting to approve the project
- June– sermon series sharing the vision with the congregation
- July– capital campaign completion
- August– final pricing and permitting
- September– guaranteed maximum price set
- October– breaking ground
- Easter 2022– first worship

Financial Glimpse

While we do not have all the final bids in yet, we are anticipating that the site work, sewer, parking, grading and the actual building will come in at the low two million dollar mark. Towards that expense, we already have about \$1,100,000 from two sources: \$800,000 from the sale of the acre lot adjacent to the church office and a little more than \$300,000 from a 2020 end-of-year gift from a generous member.

The time is right, the soil is good, and God's blessings abound. We are one church, united in our mission but with very different expressions in our four campuses. As this project continues to unfold, you will hear more and more about the exciting work we are doing together at Christ South and how each of you can be a part of planting the seed of God's work in this Good Soil.

**Peace,
Pastor Scott**

As Christ Lutheran navigates its way into a post-Covid world, how has this pandemic forever changed work, space, security, mental health, relationships and spirituality? Let's not talk about "getting back to normal." Instead, let's talk about a new normal in which people will work remotely, worship will continue online, meetings will be hybrid and large gatherings will be slow to happen. What does this mean for the mission of the Church?



FIND COMMUNITY We were not designed to live life alone but to engage in meaningful relationships at a church where we can Find Community.

BUILD FAITH Faith doesn't just happen. It is a seed that is planted deeply within us, watered and cared for so that God can Grow Faith.

REACH BEYOND The church does not exist for its members. We exist to Reach Beyond our walls to seek and find those lost and in need.

•
At Christ Lutheran, we are all about engaging people to experience Jesus!

Part I - Find Community

In April, the sermon series focused on Part I of the new CLC mission to "Find Community." April 11th's sermon was titled *On a Mat*, and spoke of leaning against others in times of need. April 18th continued *With Imperfect People* and April 25th talked about finding community that would last for all seasons. As we transition into May, the mission continues with Build Faith and Reach Beyond...

Part II - Build Faith

May 2 • On Whose Faith Are You Standing?

What we see as a small impact could add up over time to have a major influence in someone's life. We need others who have faith in us and see how God is working in our life. When Peter steps out of the boat, he does so not only with faith in Jesus, but more importantly, with Jesus having faith in him. We stand on a faith that is solid... God's faith in us. *Hebrews 12:1-3; Matthew 14:22-33*

May 9 • Who Has Built Up Faith in You?

Jesus sends the women at the tomb to go and announce his resurrection... They go with a mixture of fear and joy... Through the stories we tell, the experiences we have, God uses ordinary words to grow faith in us. Why do you believe? Who was it that helped you to know Jesus? *Deut. 6:4-9; 2 Timothy 1:3-7; Matthew 28:1-10 (NLT)*

May 16 • Whose Faith Are You Building?

A life of faith leads us to share with others our hope and trust in God. It starts by meeting others where they are, in their questions, doubts or fears. God sends each of us to walk beside others. It begins by telling your own story to those who are looking for hope, not with a spirit of timidity but of love. How will they believe unless they are told? *Acts 8:26-40; Romans 10:9-15; Luke 24:13-35*

Part III - Reach Beyond

May 23 • Beyond WALLS

Can you imagine being an onlooker when the Day of Pentecost happened? What would you be thinking and feeling? A rush of wind, fire all over the place, then all of a sudden, someone speaking YOUR language. The good news of Jesus Christ pouring all over you. Our job is to learn the language of others so that we can share the Gospel with them. How might God be calling you to share the gospel? *Acts 2:1-13*

May 30 • Beyond ROUTINE

Each and every day, mid- and even pre-post pandemic, people lose track of what day it is. We get in such a rhythm that one day bleeds into the next. It's the weirdest thing, but it's happening, to pretty much all of us. And yet, Jesus shows up on the road, and at the table, and in the regular, norm life experiences, too! Instead of letting each day bleed into the next, how can we reach beyond our norms to see Jesus at work, bringing life where maybe we just see routine? *Luke 24:13-32*

June 6 • Beyond OURSELVES

Right before this scripture in Luke, Jesus sends out the 72. Miracles happen and lives are changed. And then, these verses in Luke appear. It's by no accident that the sending out of the 72 is paired with the question, "Who is my neighbor?" This story helps us to understand that we must care for our neighbor, even when they might be framed as enemy. The Samaritan cares for the beaten man with more than enough to cover the cost of his stay. That is how our heart is designed to work. We REACH BEYOND ourselves, even for an enemy, with abundance. *Luke 10:25-37*



What's Happening at Christ South?

by PASTOR MATT

It has been awesome seeing everyone IN PERSON again! On March 7, Christ South began worshipping at Threshold Church each Sunday afternoon at 4 p.m. Yes, I know it's a different time, but it is temporary. We will be breaking ground this fall on our new building and will begin meeting at our old time in the spring of 2022. While the crowds have been smaller, we recognize that this is a strange time. It is important that we offer indoor worship as an option as more people are vaccinated and become comfortable being around people again. For those who aren't comfortable with in-person worship, we have continued to offer online worship at 10 a.m.

Our time together has been amazing. Seeing people reconnect and talk to each other again has been a blessing. This community has been patient, strong and generous during the past year. Having everyone together feels like we are returning to normal.

On Easter, Christ South held Sunrise, outdoor and indoor worship services with nearly 140 in combined attendance.

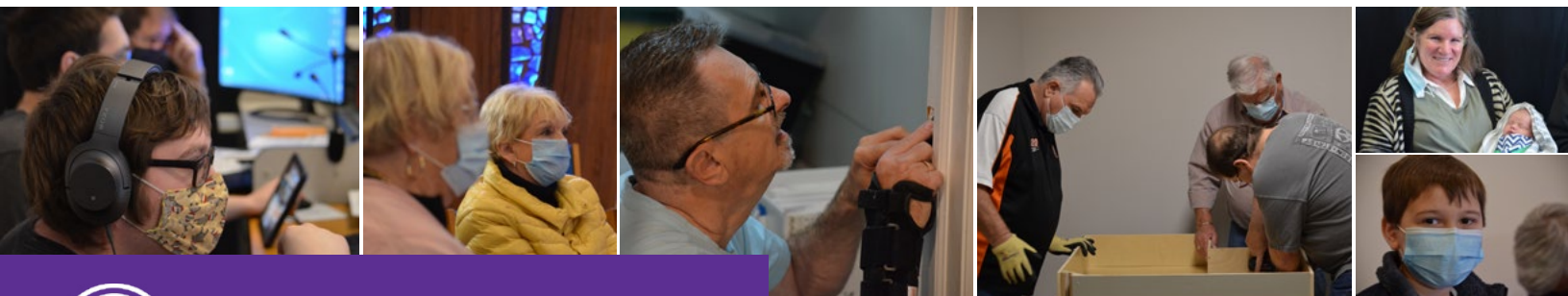
It was a powerful experience on a beautiful day where families were once again celebrating the resurrection together.

The Southman and South Sisters groups both held events in March that were well-attended. These groups have both played an important part in keeping our communities connected through the last year. Both groups are planning retreats later this year to continue to build relationships and provide opportunities for outreach.

So What's Next?

We will continue our 4 p.m. worship at Threshold with the expectation that attendance will grow as vaccinations increase. We will move forward with our plans to break ground on our permanent home this fall. We will continue to offer 10 a.m. worship online for those who are more comfortable with that option. We will continue to offer social gatherings at the farm so that our groups can connect and grow. As conditions with the pandemic improve, our plan is to offer more opportunities for our kids and youth.

Right now, we need you. We need your prayers, your financial support and your attendance. We are at a time where our congregation must be committed more than ever to supporting our plans. Five years ago when we began this journey, we didn't see something like this coming. We see the light at the end of the tunnel now – so I ask for your trust as we move forward. I continue to be humbled and heartened by the continued support, patience and resilience of the Christ South community.



A Multi-Generational Modern Community

by PASTOR TENNY

Community Garden

Plans continue for a community garden at the Concord campus. When we told Kris Edscorn, the Food Program Manager at Cooperative Christian Ministry (CCM), that we were building a garden to benefit CCM's food pantries, he said, "Yes, yes, yes! We love and appreciate fresh, local produce so much. We do try to provide our clients with as many healthy options as possible, and certainly fresh local produce would be very high on that list of options!"

With the garden located toward the front of the land, it will be a ministry that is visible to the community. We hope to have it ready to plant a fall crop and engage many of our neighbors in the project!

Worship

Worship continues, both in person and online. The online community remains strong and engaged. We continue to work at improving our technology and the content that we share on the internet. Thanks to our committed team of technology volunteers who get it done every week!

Renovations

Work continues on renovations on the Concord land, playground and building. Interior painting is about 80% completed. Storage room/sacristy cabinets are in the assembly process. Next will be renovation of the Pastor's office, playground set staining and assembly, steeple repair, and painting of the Fellowship Hall.

JOIN US FOR A VIRTUAL
WORLD TOUR
WITH

**LUTHERAN
WORLD RELIEF**

**Wednesday, May 12
6:00 p.m.**

REGISTER IN REALM



2022
**PASSION
PLAY**
OBERAMMERGAU

**Germany Tour in the
Footsteps of Martin Luther**
featuring The Passion Play of Oberammergau
with Pastor Scott and Gretchen

July 20-30, 2022

For info, email: suskovic@christelca.org



Do you have a
College Graduate?



Send us their:
**name, high-res picture, degree/college,
and any post graduation plans to be
honored in our July/August newsletter.**

**-Send info by June 10-
to Laurie Carter: lcarter@christelca.org**


Weekly E-News

**Get the latest from Christ
Lutheran delivered right
to your inbox!**

To subscribe, visit our website
or email awilliams@christelca.org



1ST ANNUAL
THRIVE T-SHIRT DRIVE

**SHOW
YOUR
SUPPORT!**

ALL PROCEEDS RAISED GO
DIRECTLY TO THRIVE PROGRAMS.

SIZES TODDLER - ADULT



ORDER HERE TODAY!


Welcome Kathy Hofmann to Church Staff!

by PASTOR DREW

We are happy to announce that Kathy Hofmann is a new staff member of Christ Lutheran, serving as our Guest & Hospitality Director. She will be working with Pastor Drew, Gretchen Suskovic, and the Welcome team to follow up with new guests and to encourage their involvement in our church.

Here is a short biography from Kathy:



"I have been a member of Christ Lutheran for 25 years and I'm married to my husband Bob for 32 years. The church family has practically raised our kids, Allison and Kyle, from first communion all the way to the Experience in high school. Originally from Monmouth, Illinois, I graduated from the University of Illinois in Champaign with a degree in Elementary Ed. I took a job as a flight

attendant with Piedmont (now American) in 1986 and packed my bags for Charlotte, never looking back. Flying has afforded me the opportunity to see the world and meet new passengers and co-workers every day with a smile and some kind words, in spite of all its ups and downs! Besides flying, I serve as the welcome person in my neighborhood and poet laureate of the family. I'm excited to be joining the staff as Guest & Hospitality Director and working with this talented staff. Serving has been my life's work, so I feel God has put me in this role in His perfect timing to take great care of each new person who enters our doors at CLC!"

You can reach out to Kathy at khofmann@christelca.org.

New in REALM: Skills & Interests

by LAURIE CARTER

We have recently added a new component to our ministry tool, REALM, called Skills and Interests. This feature will allow the staff and church leaders to match congregants to serving roles and serving teams based on... you guessed it... skills and interests! We hope this tool will help our members to get more involved and learn about new opportunities to serve at Christ Lutheran, and it will help the staff identify who has a particular skill or interest they may need in a volunteer role.

Please take a few minutes and log into [REALM](#); go to your profile, click "Edit Profile," then "Personal Information" and add your skills and interests using the drop downs.

If you haven't logged into REALM yet, email lcarter@christelca.org and request an invitation to join Realm. There is no better way to stay connected to CLC!

As the church awakens from quarantine, we will need new teams of volunteers to jumpstart the activities and ministries of the church. Please help us and find new ways to enrich your own life in serving others!



Music for Ghana Update

by KENDALL FICKEN

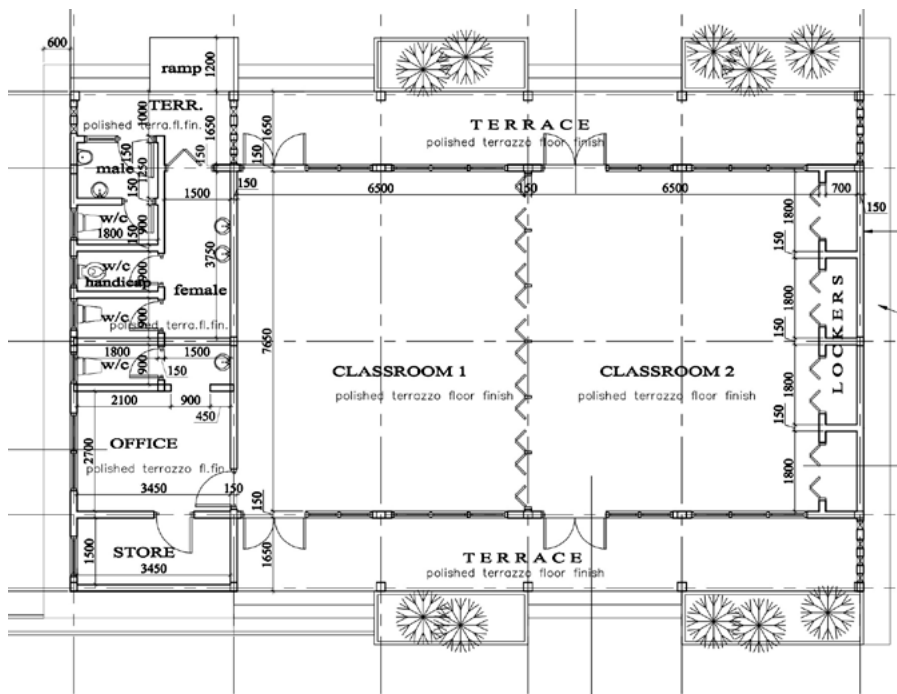
Thank you Christ Lutheran for your overwhelming support of Music for Ghana. In early April, Music for Ghana sent three U-Haul wardrobe boxes of instruments over to the Pepease-Presbyterian Primary and Basic Schools in Ghana. In total, your generous gifts provided 24 instruments for the students to begin learning music. I am so appreciative of all of your support in my endeavors to provide music for these students.



We have also been busy working with an architect in Ghana, who sent over the estimated cost and building design for the Center of Creative Arts (design pictured below). This building will provide the students with a classroom to practice on the instruments we recently shipped. The total estimated building cost for the center is \$68,000. So far, we have raised \$1695 for the Center for Creative Arts and \$815 for the water harvesting system. That means we have 65,000 dollars left to raise. We need your help.

If you would like to donate to the building process, GoFundMe links can be found on my website under the tab *"Our Dream for the Future."* or you can leave a check at the church office payable to Music for Ghana. Thank you so much for your support.

For more information, visit musicforghana.org



DATES TO KNOW

Last RSVP Required for Worship • May 2
Last Night of Wednesday Classes • May 5
Nursery Resumes • May 9
RSVP Required (Register on REALM)
Last Sunday School • May 23
Summer Schedule Starts (Prov.) • May 30
9:00a Traditional • 10:45a Contemporary

REVISED & EXPANDED
CHARLES F. STANLEY BIBLE STUDY SERIES

DEEPENING YOUR PRAYER LIFE

APPROACH GOD WITH BOLDNESS



CHARLES F. STANLEY

FAITH FELLOWSHIP
**NEW STUDY: DEEPENING
YOUR PRAYER LIFE**
Sundays • 10 a.m. on Zoom

Prayer is communication, a conversation with our heavenly Father. In this 6-wk. series, Dr. Charles Stanley calls us to examine our prayer life & approach God with boldness.

For Zoom link, go to:
christelca.org/online

CHRIST LUTHERAN
cornerstone
gifts



DON'T FORGET!
Mother's Day is May 9

Open Sundays after service & MTW 10a-1p

AVAILABLE FOR PRIVATE SHOPPING ANY DAY
(call church office to schedule 704-366-1595)



CHRIST LUTHERAN WEEK
at Lutheridge **JULY 18-24**

As our middle schoolers are attending Kairos Confirmation Camp this summer, consider sending the rest of the kids, too! Go to the Novusway website and see what's available July 18-24. Programs are listed by different age groups for 1st-12th graders.

Email Pastor Melody for info (msimpkins@christelca.org)
-or- explore and register at:

lutheridge.org/summer-camps

Youth Director (full-time position)

Christ Lutheran is seeking a High School/Middle School Youth Director to create a welcoming environment while guiding & providing faith direction & encouraging discussion for all youth to enable them to grow in faith.

**For full job posting, click ad in E-News
or email msimpkins@christelca.org**



Disability Inclusion Efforts & Sensory Friendly Worship Experiences

by CAROLINE ROSE TARGONSKI

I am so thankful to have partnered with Christ Lutheran and Thrive Day School for my doctoral capstone project in occupational therapy. Through this project, our church took steps to create a more inclusive, sensory-friendly worship experience. It has been a blessing to work with all three campuses of Christ Lutheran to increase our church's inclusion for those with special needs. I am excited to share some of the steps that have been taken as we continue to work towards providing a place where all God's children are intentionally welcomed and included.



Ministry Development

- Conducted a church accessibility survey for preschool-high school families across all campuses to identify congregations' perception of disability and barriers/supports for church participation for families affected by disability:
 - 25-30% of the families who responded have a family member or close friend with special needs.
 - Biggest barriers to participating in church: exclusionary attitudes of the church; inadequate volunteer training/education.
 - Biggest supports: volunteer training on strategies for working with individuals with special needs; congregation-wide disability awareness efforts; buddy ministry (1:1 support).
- Hosted a respite event and family community event for Thrive & Christ Lutheran families.

Education

- Hosted a staff training on disability awareness and strategies for ministering alongside those with special needs.
- Created a volunteer training PowerPoint on teaching strategies for working with those at all ability levels.

- Created a booklet of occupational therapy-based strategies for churches and volunteers to utilize that encourage religious participation for those with special needs.
- Created a resource folder of training PowerPoints, booklets, and additional resources regarding disability ministry for staff and volunteers to utilize.

Advocacy

- Added disability to the conversation of diversity and inclusion on Integration Team meetings.
- Consulted with church staff to implement activity and environmental adaptations and modifications based on each campus' unique needs.

Sensory Spaces

- At all campuses, we have:
 - Sensory-friendly worship bags filled with fidgets, calm-down items and sensory toys.
 - Youth and adult noise-reducing headphones.
 - Fidget chair bands for flexible seating.
- At Christ Providence:
 - Sensory kits filled with fidgets and sensory items for volunteers to utilize in classrooms or small group settings.
 - Flexible seating options including scoop rocker chairs and balance discs.
- At Christ Concord & Christ South:
 - Sensory corners within the worship spaces, which uses an inclusive approach to allow children and parents to participate in worship together as a family while the child's sensory needs are met.

I would like to thank Christ Lutheran, Thrive and Thrivent for their support with my project. I am excited to see how God continues to grow this special needs ministry for His glory!





HYBRID

June 14-18

- for ages 4 through completed 4th grade -

Join us for music, bible stories, a service project & fun craft! The week will be mostly virtual with limited in-person opportunities.

**REGISTER ON REALM
by May 23!**

You are Priceless

by PASTOR MELODY

This is my favorite time of year! Spring is here; we just had an amazing Easter week; and we're looking towards summer. This is also the time when we in Family Ministry start really thinking about Vacation Bible School.

I love VBS! It's a week where kids learn and grow closer to God in fun and amazing ways. There are Bible stories, crafts, songs, games, activities and so much more. But as we know, with COVID things have changed. Last year everything was virtual. It was fun, but was not quite the same. The best part was when I could interact with the kids. We had evening Zoom calls with the kids. We had dance parties, bingo games and campouts with bedtime stories. They were all great!

This year's theme is "Treasured: Discovering you're Priceless to God." It's very important for kids to learn they are not only treasured by their parents, but they're also treasured by their creator. Kids will learn that God knows them, hears them, comforts, forgives and chooses them! The week will be full of treasure hunt activities and games. This year's VBS is going to bring joy and excitement into these kids' lives as they learn about God's great love.

But like last year, it is going to look different than 2019. We can't safely have all the kids we normally do in person, and we also don't want to be completely virtual. This year we will be having a hybrid VBS!

What is a hybrid VBS you ask? Good question! Each day for the kids, we are going to provide all the great Bible

stories, crafts, songs and activities virtually just like last year. The difference is that we are offering families the opportunity to register their camper to attend in-person activities from 10a.m.-12p.m. for two days of VBS week. There will be a maximum of 30 kids per day, so register early! We will safely gather to enjoy all the fun and fellowship VBS has to offer!

Come join us for Christ Lutheran's Hybrid Vacation Bible School, June 14-18! Please register in REALM by May 23rd.

A Blessing for Our 2021 High School Graduates

May you be blessed with **courage**,
that fear may never keep you from exploring new paths.

May you be blessed with **hope**,
that you may never give up on yourself or others.

May you be blessed with **goodness**,
that in you strangers may find a generous friend.

May you be blessed with **laughter**,
that you may never take yourself too seriously.

May you be blessed with **curiosity**, that you
may always desire to seek out the mystery of faith.

May you be blessed with **gratitude**,
that you may see all of life as a gift.

May you be blessed with **remembrance** of one another
and your time together here... for there is forever a thread
woven through your spirit. (Author Unknown)

Congratulations to Our High School Graduates

CLASS OF 2021



Lily Barger
Weddington



Caleb Breeggemann
A.L. Brown



Abby Brincefield
Providence



Kat Davis
Sun Valley



Connor Deir
Providence



Bekah Dodd
Myers Park



Grant Hodas
Levine Middle College



Katie Hoefler
Country Day



Clay Houston
Grace Academy



Pearce Howard
Grace Academy



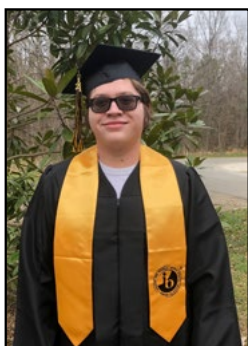
Brenna Kelly
Myers Park



Anna Kulesa
South Meck



Emma Kate Lauf
Country Day



Hayden Myers
Concord



Nicky Osundina
Hawthorne Academy of
Health Sciences



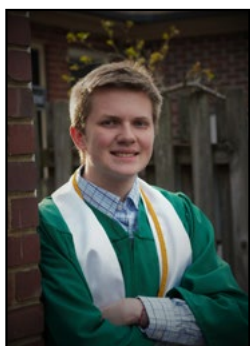
Alexander Parr
South Meck



Ethan Parr
South Meck



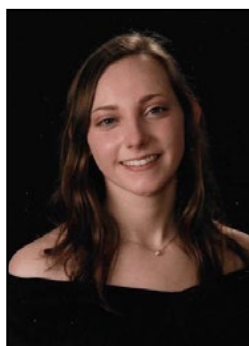
Moses Payne
Butler



Garyn Peterson
Myers Park



Anders Rumpf
Ardrey Kell



Lauren Smith
Providence



Trevor Sumlin
Providence



John Vassallo
Country Day



Patrick Yu
Providence



Challenges and Groceries

For over a year, McPIE has continued to engage students and support families through the COVID-19 pandemic. What began as a 'quick pivot' has turned into an array of STEAM (Science, Technology, Engineering, Arts and Math) Challenges, recipes, grocery bags, meal deliveries, incentive prizes and support through adult classes.

STEAM Challenges

With Family Night not able to be offered in person, students have been engaged and learning fun science concepts through weekly challenges. This spring, the semester was broken into three different themes: Tinker Time, The "A" in STEAM, and Outdoor Adventures (four weeks of each theme).

Tinker Time was a fun, technical theme where students learned about gears, hydraulic claws, projectile motion, and potential and kinetic energy. The "A" theme required students to look for art in many different forms. Can you find a face in a household item? How do you make art look three-dimensional? Art is also to feel, not just see, by creating rubbings of surfaces. With spring now in full bloom, students are heading outdoors to explore! Sunny days call for sun dials, nature scavenger hunts and exploring flight with bubbles, kites and paper airplanes. Students have been earning incentive prizes throughout the semester by completing challenges, uploading photos and videos, and participating in weekly Zoom class. From March 2020 to March 2021,

3,456 STEAM Challenges have been distributed—that is a lot of engagement and fun, hands-on learning happening!

Grocery Support

Student engagement has only been one piece of the puzzle. Families are also in need of support. Grocery bags continue

to be distributed at McClintock every Wednesday (even during holiday weeks). From March 2020 to March 2021, 6,367 bags of groceries have been distributed. These bags are filled with canned meats, vegetables, rice and beans, spaghetti, cereal, breakfast bars, etc. Fresh

produce was also donated by the Garden Ministry (nearly 3,000 pounds!). Families remark how appreciative they are for the groceries and what a difference it makes for them. This is all possible from donations to the [Feed A Family fund](#), Thrivent Action Teams, grants and food donations. Volunteers help purchase groceries, deliver them to the church and fill each bag.

Adult Classes

Parents also have the opportunity to participate in virtual classes. Let's Race focuses on listening, learning and improving communications between people of different races and ethnic backgrounds. ESL is for those families who want to improve their English language and conversation skills. Getting Ahead and Women's Journey are both Pathways Out of Poverty classes that center around creating financial stability. Classes meet online on Mondays and Tuesdays.

It is hard to believe that Family Night has not met in person in over a year. While the manner in which McPIE is engaging and supporting looks different, the mission has always remained the same: *Creating future stories... building community... supporting families... inspiring volunteers. So that ALL McClintock students succeed!*

Woodworking Club

The wonderful leaders of our Woodworking Club were at it again! With social distancing protocols being followed at McClintock, staff reached out to see if benches could be built to accommodate more students with places to sit outside during break and/or lunch. The woodworkers built 12 benches that are 8 feet long. These are a great addition to the outdoor seating area and allow students to remain socially distant. Students have enjoyed these new additions! *"These are strong. They don't go eek, eek, eek."*

Students are also excited about using these when athletics resume. *"These are going to be great for watching games!"* Thank you, woodworkers, for taking your time to add something extra to these unusual school days!



UNUSED P-EBT CARDS?

If you have received a Pandemic Electronic Benefits Transfer (P-EBT) but do not plan on using it, please consider purchasing groceries and donating them to McPIE to support McClintock families.

McPIE
McClintock Partners In Education

RATION CHALLENGE STAND WITH REFUGEES

Join others from Christ Lutheran and take the Ration Challenge this June, and show refugees we really are all *#inthistogether*.

LEARN MORE & REGISTER:
rationchallengeusa.org

Sponsored by Church World Service

FEED A FAMILY

DONATE onrealm.org/christelca/-/give/now

McPIE

HELP FUND A SERVICE PROJECT WITH **thrivent**

Action Teams

For more information:
contact Tammy at tsanders@christelca.org

SPECIAL OFFER from Lutheran World Relief

BUY 2 BAGS
LUTHERAN WORLD RELIEF
FARMERS MARKET COFFEE
GET 1 FREE!

Use promo code LWRCOFFEE now through May 31
lwr.org/coffee

Room In The Inn: Thank You!

Christ Lutheran was not an “inn” this winter but still played an integral role in helping our homeless neighbors in need. One week a month, volunteers made sandwiches, packed them in bags, added fresh baked cookies from our resident chef, Mike Wallace, and delivered them to the shelter. A special shout out to the “South Sisters” for taking on extra sandwiches. THANK YOU to all the dedicated volunteers who made this happen and supported our neighbors during such an unusual winter.

Also, at the time of this writing we do not know the status of Room In The Inn for the coming season. We will provide updates as we receive more information.

McPIE Summer

Once again, summer at McPIE and CLC will not look normal. Charlotte-Mecklenburg Schools will be hosting Camp CMS, a FREE 6-week camp designed for students to work toward mastery learning. Transportation, breakfast, lunch, physical activity, enrichment programs and social-emotional learning supports will be included. McPIE is hoping to enhance Camp CMS with science modules. Details continue to be arranged!

For adventure loving students, McPIE will have opportunities for students to spend a week away in the beautiful North Carolina Mountains at Lutheridge and Camp Agape in Fuquay-Varina. These camps offer a secluded setting for spiritual renewal, group building and outdoor adventures. Athletics camps will also be available for students who have a passion for sports. Students can choose to participate in girls and boys basketball, baseball and soccer!

Summer Incentives: Help Wanted!

by ANGELA DAVIS

Partnering with McClintock and Camp CMS, we are hopeful to continue bringing STEAM enrichment and fun to students. Let's face it, student participation and attendance can be driven by incentives. Each day a student attends camp, they will earn “Behavior Bucks.” These bucks lead to opportunities to choose a “prize” from the bin or save up to enter a drawing for bigger prizes. Here's how you can help! Purchase incentive prizes and drop them off at the Outreach Office by the beginning of June.

If you would like to help, please send me an email at adavis@christelca.org. I can also share links for purchasing and then have items delivered to the church. Examples of incentive prizes include:

- soccer balls
- basketballs
- workout equipment (yoga mat, resistance bands)
- art supplies
- gift cards (\$25 Xbox and iTunes cards)
- Bluetooth headphones
- robotic kits
- laptop/water bottle stickers



CHRISTLUTHERAN

providence | south | concord | online

4519 Providence Road • Charlotte, NC 28226

Non-Profit Org.

U.S. Postage

PAID

Charlotte, NC

Permit No. 1741

return service requested

CHRIST LUTHERAN'S BI-MONTHLY NEWSLETTER

Christ Connections



may/june 2021

Scott Suskovic • Senior Pastor
Drew Goodson • Pastor, Evangelism & Adult Ministries
Melody Simpkins • Pastor, Family Ministries
Matt Simpkins • Pastor, Christ South
Tennyson Shifley • Pastor, Christ Concord
Amy Daniels • Director of Outreach
Mark Glaeser • Minister of Music
Gregg Huether • Director of Property and Finance

JOIN THE NEWSLETTER MAILING LIST!

E-mail Connie Kramer at ckramer@christelca.org and let her know you'd like a copy of Christ Connections mailed to your house. You can also view the newsletter through the link on E-news or online at christelca.org/latest-news.

To submit a story or news item,
Fill out a Communications Project Request Form,
found online at form.jotform.com/80496362784165.



Watch Past Services on our YouTube Channel

Featuring recent sermons,
worship videos, ChristKidsTV
episodes, promo videos & more!



YouTube



Christ Lutheran Charlotte