

# Christ Connections



CHRIST  
providence



CHRIST  
south



CHRIST  
concord



CHRIST  
online

november/december 2022

## SUNDAY SCHEDULE

### CHRIST PROVIDENCE

8:45 a.m. **Traditional Worship**  
10:00 a.m. **The Bridge Service**  
10:00 - 10:45 a.m. **Sunday School**  
11:00 a.m. **Contemporary Worship**

4519 Providence Rd., Charlotte

### CHRIST SOUTH

10 a.m. **Family Worship**  
(at Polo Ridge Elementary)

11830 Tom Short Rd., Charlotte

### CHRIST CONCORD

10:00 a.m. **Multi-Generational**  
**Modern Worship**

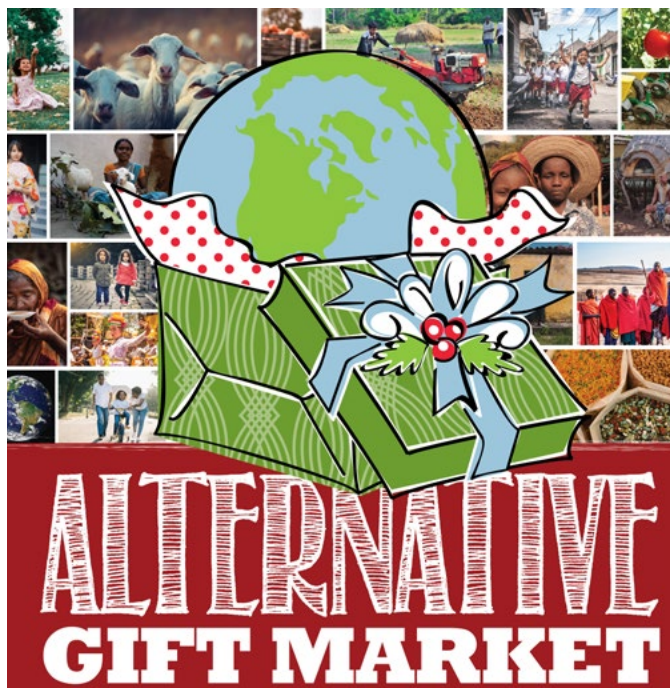
11:00 a.m. **The Gathering**  
(for families of children  
with special needs)

240 Pitts School Rd. NW, Concord



For links to live-stream services,  
upcoming virtual events, bulletins,  
ChristKidsTV and more:  
[christelca.org/online](http://christelca.org/online)

CONNECT ON SOCIAL MEDIA



2022

HOLIDAY  
SCHEDULE

Save the Dates



PASTOR SCOTT SUSKOVIC

I can't approach November without thinking about my favorite holiday, Thanksgiving! For over ten years, Nathan and I have picked up a couple of turkeys and made the rounds to two or three families who are frying turkeys in their driveway. We go to each house, we drop in a turkey, we nibble, eat and talk until the bird is perfectly done. On the way home, we give away one or two of the turkeys and bring the other back to our house for a feast.

And then, as perhaps many of you do, before diving into all the traditional foods, we pause to reflect on what we are particularly thankful for this year. Over the years, we have lifted up weddings of our children, the memories of loved ones who have died, new work opportunities and the gift of family. But always on that grateful list for the past 24 years has been Christ Lutheran, even during these turbulent, post-Covid years full of change.

On Sunday, October 23, I preached about how to make great wine. Great wine comes from great grapes. And great grapes come from stressed vines. The wine maker must prune back the branches and withhold water so that all the energy of the vine is focused not on making leaves or branches but producing luscious grapes. In the wine making world, "stressed vines make great wine."

The vines don't like to be stressed, and neither do we. But it is during those times of stress that we mirror that vine and focus our efforts on those things that produce fruit.

I must say that I have felt that stress these past couple of years. With all the changes on staff and the lack of clarity as to what a post-Covid church looks like, I have found myself anxious. But I am not alone. I've spoke with senior pastors of large Lutheran Churches across the country, and everyone is experiencing the same:

- 60% or less worship attendance
- Decimated youth groups
- Difficulty finding volunteers
- Anxious staff

So why do I pause on Thanksgiving to give thanks once again for this amazing church? Because I know that stressed vines make great wine. God has pruned us back not to punish us, but to focus our ministries on those things that produce wonderful fruit. We will need to eliminate sacred cows, programs and ministries of the past. We will have to rewrite job descriptions. We will need to redefine what success looks like.

Right now? A little uncertainty. Lots of change. Some angst.  
To come? Even better fruit.

That's why when the bird is on the table and the sides are all around, before we dig in, I'll raise a glass of wine for a toast and a word of thanks for Christ Lutheran.

**Cheers,  
Pastor Scott**





**schedule reminders**

LAST WEDNESDAYS TOGETHER  
**DECEMBER 14th**  
resumes January 4, 2023

LAST SUNDAY SCHOOL  
**DECEMBER 18th**  
resumes January 8, 2023

**CHRIST**providence

**THANKSGIVING EVE**  
*Dinner & Worship*  
**Wednesday, November 23**  
at Christ Providence

**Dinner • 5:00 p.m.**  
\$6 adult/\$4 child • rsvp required>>

**Worship • 6:30 p.m.**  
in the Sanctuary -and- on Christ Online  
**no WT programming**

FOR LIVE-STREAM LINK: [christelca.org/online](http://christelca.org/online)



**PRIMETIMERS**  
**Christmas Party**  
**Sat., December 3 • 3-5:30 p.m.**  
at Christ Providence (Pit)

- Dueling Pianos with Mark & Eric-
- Cookies & Punch-
- Visit from the "real" Santa-
- \$5 Registration Fee-

**JOIN GROUP IN REALM or email**  
Don Essick for info: [dessick@me.com](mailto:dessick@me.com)

***Decorating for Christmas***

The worship and music team needs many hands to make light work in decorating Christ Providence for the Christmas season.

**SETUP Friday, December 2**  
**TEARDOWN Monday, January 9**

For info or to volunteer,  
contact Alice McRorie:  
[alicermcrorie@gmail.com](mailto:alicermcrorie@gmail.com)




***Third THURSDAY***  
for adults of all ages

**November 17 • 11:30 a.m.**  
at Christ Providence (Pit)

Friendsgiving with Turkey and all the fixins (and pies!). Pay online or have exact change at the door. Bring a friend.

**\$10 • Register in REALM**



## New Sermon Series



*When you get beyond the flowery, metaphorical language of streets paved with gold, harp music and a buffet with no calories, what is heaven really like? While no one has made that journey and returned to describe it, we can point to passages in scripture where the metaphors and images point to a reality that we as believers call our sure and certain hope.*

### November 6 • All Saints Sunday: Reunion

At funerals we often hear of the deceased in heaven having a reunion of sorts, "Mom and dad are together again." "Joe is playing golf with his buddies again." "Marge is getting things all organized in heaven." On this All Saints Sunday, where does it assure us in the Bible that we will see our parted loved ones again?  
*1 Thessalonians 4:13-18; John 11:17-27*

### November 13 • Restoration

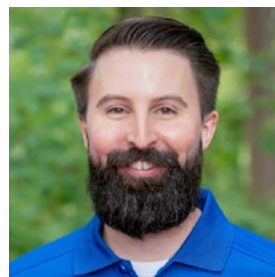
Right now, the Bible says that all of creation groans under the darkness of sin. But there will come a day in which we will return full circle to the Edenic life that God had created for us. And in that state, that which is broken will one day be restored—and we shall see the face of God. *Revelation 21, 22:6*

### November 20 • Revelation

We see through a glass dimly, Paul says, but one day face to face. We once walked with God in the Garden but now only encounter him in that still small voice. We long to see the face of God, but in our current state we cannot bear it. What is heaven like? All will one day be revealed. *1 Corinthians 15; John 21:1-14*

## Welcome Deacon Kenny Champagne

by PASTOR SCOTT



We are excited to welcome Deacon Kenny Champagne as the new Director of Family Ministries beginning on November 20. Deacon Kenny comes with 15 years of Youth and Family Ministry experience and has served a multi-campus church. He will begin his ministry with us as an Intern for the first nine months as he transitions from being a rostered Deacon in the ELCA to being a Pastor.

Kenny will be introduced at all services at Christ Providence on November 20. Please make it a point to introduce yourself to him and invite him out for a cup of coffee or a meal. Or better yet, take him to a hockey game! It is his favorite sport.



# Honoring Our Loved Ones

All Saints' Sunday is the time we set aside to remember all those who have passed on before us. Join in the remembrance of our loved ones with a lighting of a candle at this special service.

*All Saints Sunday*  
**November 6**

Members of Christ Lutheran that have passed since last year's All Saints Day include:



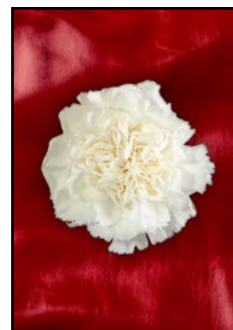
Jean White



Carolyn Draper



Jeanne Toevs



Frank Rittershofer



Marty Bartholomew



Ann Powell



Jim Summer



Helen Yetter



Joe Wingard



Ellen Burton



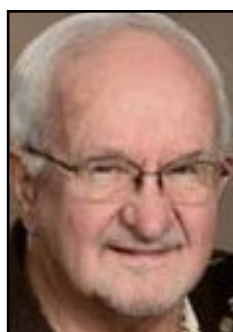
John Wilson



Ben Cline



Frosty Darnell



Buddy Burton



George Cowles



Carolyn Darnell



Judi Gromis



Flo Beard



Don Creason



Don Gruening



Ron McCaskill



Elaine Powrie



Trish Mille



## Legacy Planning Lunch

**Sunday, November 13**

**12:15 p.m. at Christ Providence (Forum)**



Join Stephanie Burke of the ELCA Foundation to learn how to ensure that your legacy has a lasting impact for loved ones & the organizations important to you.

Lunch provided by CLC Endowment Committee

**Register in REALM by November 6th**

Info: [mparker@christelca.org](mailto:mparker@christelca.org)



## Qualified Charitable Distributions

by THE ENDOWMENT COMMITTEE

Are you 70 1/2 or older? If so, a qualified charitable distribution (QCD) may be a tax-savings strategy that makes good sense for you. A QCD is a direct transfer by your IRA custodian from your traditional IRA to a qualified charity (Christ Lutheran is a qualified charity). This transfer may count towards your IRA's required minimum distribution (RMD) for the year, but is not included in your taxable income for income tax return purposes. Also, the distribution may not be included as a charitable tax deduction if you itemize on your tax return.

If you believe a QCD may be appropriate for you, contact your tax advisor or financial professional for further details.

**CHRIST LUTHERAN**  
**cornerstone**  
*gifts*

**Christmas is Here!**

**Shop our holiday gift selection today!**

**Like us on Facebook!**  
**Cornerstone Gifts at Christ Lutheran**

**NEW WORSHIP TIMES START NOVEMBER 6**

**10:00 a.m. Multi-Generational Modern**  
**11:00 a.m. The Gathering**  
*(for families of children with special needs)*

## INSTRUCTIONAL DESIGNERS NEEDED

CLC is seeking volunteers who have professional expertise in instructional design to assist with the development of a learning program.

**If interested, please contact Pastor Ryan:**  
[rritzmann@christelca.org](mailto:rritzmann@christelca.org)



**SHANNON BREAM**  
**THE WOMEN OF THE BIBLE**  
*Speak*  
*The Wisdom of 16 Women and Their Lessons for Today*

**FAITH FELLOWSHIP:**  
**The Women of the Bible Speak**  
**Sundays • 10:00 - 10:45 a.m.**  
**at Christ Providence (Forum)**  
**-and- Online (Zoom)**

**Starting Oct. 23, Faith Fellowship will begin a new study on ten of the women from author Shannon Bream's book & how their wisdom & lessons can help us today.**  
[christelca.org/online](http://christelca.org/online)

## New Study for Sunday's Faith Fellowship Class

On October 23rd, Faith Fellowship began a 5-week study on *Women of the Bible Speak—Wisdom of the Women and Their Lessons for Today* by Shannon Bream. People unfamiliar with Scripture assume that women play a small, secondary role in the Bible. In ancient times, women were secondary in culture, often considered property, not people with leadership roles or social impact. But not in the eyes of God. In fact, they were central figures in numerous biblical stories. In this book, author Shannon Bream presents the lives of 16 biblical women, 10 of which will be our focus. She reflects not only on the meaning of each woman's life, but on how they relate to each other and to us. In studying these heroes of faith, we can find wisdom and warnings for how to better navigate our own faith journeys.

Then, starting November 27th, we will begin our advent study which focuses on *Incarnation—Rediscovering the Significance of Christmas* by Adam Hamilton. This book explores the meanings of the various names and titles used to address Jesus (Lord, Messiah, Savior, Emmanuel, Light of the World, Word Made Flesh) and what they tell us about the child whose birth we celebrate at Christmas. His explanations are meant to move us beyond simplified, sentimental understandings of the story to recognize, celebrate and act upon its deep truths about who Jesus is and what His coming means.

Faith Fellowship meets on Sundays from 10-10:45 a.m. at Christ Providence (Forum A & B) and on Christ Online (Zoom). Please find our Zoom link on Christ Online's virtual schedule, located at [christelca.org/online](http://christelca.org/online). This class is led by Barbara Burton, Milt Martin, Miriam Morrison, Bob Steele and John Stensrud.



## My Last Blog

by LAURIE CARTER

Retirement. It's a strange new world, most of us only experience once. We can't practice it or experience it until it arrives (kind of like having a first baby). We wait...and wait...and wait and start preparing and then suddenly things start changing... really fast! Little things you may not think about until it hits you in the face; like removing all the ongoing staff meetings on your calendar that were there in perpetuity for 22 years, and you are deleting the entire series or figuring out how to word an email away message that says you're never coming back! I guess Teams will disappear when my email is disconnected. It was my lifeline to my colleagues during Covid and working from home... I'll miss it.

The church staff is changing. When I arrived, Scott, Mark and Amy were here. Tenny, Gretchen and I started about the same time. All of us (and many others on staff) raised our kids at Christ Lutheran and what a blessing that has been! Those kids have blossomed into amazing young adults making a difference in their communities and in their professions, just as many of your kids. Aren't we blessed to have such an amazing faith community instilling in them a servant heart with strong values and concern for each other and for their community?

I think about Hans Teich, Rick Herberg and Ken Sumlin who supported and encouraged my Ryan in the Crop Walk year after year. Celeste Lupo Hack was such an inspiration for him, and he loved working with her at the Soup Kitchen. As a single mom raising a son, I am so grateful for the mentors in Ryan's life! Sigrid Teich, who saved a torn but beloved quilt. Linda Warren Sidway at the Children's Center taught him to walk, and we both feared he would start school in diapers having no interest in potty training! (That didn't happen!) David Helms gave Ryan his first razor and taught him how to shave. Amy taught Cherub choir and Tenny was his Luther Boys choir director. Kristin Glaeser Kavazos was his first babysitter. Debbie Kempter made his Quillow and helped him buy his first home. Dozens of you supported me and Ryan in our theatrical performances, and then there's Mark Glaeser, a mentor to several generations of all our kids in The Experience (mine included), and what a blessing to have worked with him for my 22 years!

You may be thinking this blog is more about my son, but it's not. It's about 30 years at Christ Lutheran and 22 years on staff. It's about memories and experiences so many of you have had in my life and in each other's lives. Ryan seriously refers to his CLC family as the Christ Lutheran Mafia. You are our doctors, our dentists, our realtors, our lawyers, our teachers, our coaches, our pastors, and our closest friends! How many people are blessed with that feeling in their faith community?

Yes, the staff is changing, but that's not a bad thing. Change brings new ideas and new energy. It's important to know when to hand over the reigns (something I wish some in our government could figure out!). I leave you in great and capable hands. To the team... you got this! Marcie, Mary, Alexis, Aimee, Kathy, Connie, Olivia, Thomas, and Pastor Ryan. They are young, creative, and extremely capable. They feel called to their profession every bit as much I have been. Pastor Scott, thanks for the opportunity those 22 years ago... and don't forget how many years we have celebrated birthdays together!

Does someone leave a legacy when they retire? If they do, I hope mine will be that I left the church better off than when I started. I guess it's kind of like life...at the end of the day, I hope it mattered that I was here and that I made a difference. Thanks for the memories...see y'all in church!

Pastor's Blog is published weekly and can be found at [christelca.org/blog](http://christelca.org/blog).



**CHRIST**south

## Christ South Worship & Community Center Update

by AIMEE TOPPING

In October, we had a series of Town Hall Meetings to update the congregation on the progress of the Good Soil Christ South building project. The presentation began with a review of the vision for our multi-campus church and the history of South since its launch in 2017.

Along with sharing pictures of the building, the goal of the design was explained to focus not only on being a church, but also a space to gather the congregation and community for outreach, fellowship and more. To meet these goals, the building has grown to include classrooms, a nursery, meeting areas and a kitchen with a total of 14,500 square feet under roof. The building will cost approximately \$4.6M with site work and soft costs coming in at an additional \$2.1M. Previous plans for South included multiple buildings constructed in phases on the 12-acre property, however, the current design includes just one building to meet all the needs of the growing population at Christ South.

Currently, the Design Team is beginning the several month permitting process. Once in hand, these permits can be held for up to a year before breaking ground. To move forward with the congregational vote to break



ground, Council has requested that attendance at Christ South first reach a consistent 100 people on Sundays. As of late October, average worship attendance is just over 55 people. For more detailed information about the timeline, design, and next steps, please visit [christelca.org/resources/good-soil](http://christelca.org/resources/good-soil).



## Change Brings Opportunity

by KAREN COSTEA

The congregation of Christ Concord bid a bittersweet farewell to our friend and pastor, Tennyson Shifley, on October 2 with a food & fellowship sendoff. His five years of ministry on this campus affected so many lives and his tenure saw significant growth in weekly attendance here. He will certainly be missed, and we are taking his parting words to heart: *change brings opportunity*.

For a couple of months, we've been conducting an experiment of sorts, bringing families of children with special needs into a new worship experience called "The Gathering." This safe, shush-free service has provided an inclusive worship experience where all are free to participate with joy and gladness of personal expression! Our regular blended service time shifted to 9:30 a.m. to accommodate this second service at 11 a.m., and so far, the results are astounding!

Families who haven't felt welcome to worship anywhere else for a very long time are coming here on a regular basis and are calling Christ Concord home. Two of those families joined in our latest round of New Members and three of those children were baptized in October.

Starting November 6, as we usher in the time change to Eastern Standard Time (EST) and welcome our interim pastor, Roger Storms, we will shift our worship times back to 10 a.m. for our blended Multi-Generational Modern Worship and 11 a.m. for The Gathering. We're anticipating a tremendous time of worship, relational fellowship and community-building as we stand arm-in-arm to worship the Lord together!

Here's some holiday events happening at Concord that you don't want to miss:

### **Friendsgiving (November 23, 6:30pm)**

We will share in a potluck dinner fellowship followed by a time of Thanksgiving with songs of praise and testimonies of God's faithfulness and grace.

### **Cookies, Cocoa & the Chrismon Tree (Nov. 27, 4pm)**

We invite all who are interested to join us for a cookie exchange (please provide a recipe card) and a time of learning about the Chrismon tree as we decorate it. What does each ornament represent? Why don't we just use those red, green and gold balls or colored flashing twinkle lights like we do at home? Come on out and share this time of learning, loving on each other—and there's also sure to be laughter!

### **Christmas Eve for Children & Families (Dec. 24, 3pm)**

We will share in a special time of music, puppetry, storytelling and activities geared towards our little ones but sure to delight children of all ages. There might just be a Christmas Eve surprise waiting at the end of the service!

### **Christmas Eve Candlelight Communion (Dec. 24, 6pm)**

This more traditional time of lessons and carols by candlelight will usher in the birth of our Messiah!

### **Cozy Casual Christmas Morning (Dec. 25, 10am)**

Open your family gifts and eat breakfast at home, then join us for a casual worship time. Some of us will even be in our pajamas to celebrate the birth of our Newborn King! Have guests in town? Bring them along!!

### **New Year, New You (January 1, 10am)**

Start 2023 on the right foot, in church with your family of fellow believers. We're planning a time of reflection and renewal as we step into the new year together.

If you have never visited Christ Concord, we extend a cordial invitation for you to come and see what God is doing in our midst. Thrive Concord is ablaze with activity and academic growth for all our students. It's so sweet to catch a glimpse of the world through their precious eyes. As we heard preached recently, "With people, nothing is possible. But with God, all things are possible!" We're claiming that promise at Christ Concord and pray God's richest blessings on you and your family during the upcoming Advent season – a time of anticipation for true miracles!





*Join us for*

# THANKSGIVING WORSHIP

**Wednesday, November 23**

**6:30 p.m. at Christ Providence**  
dinner at 5pm (rsvp required)

**6:30 p.m. Friendsgiving & Potluck**  
at Christ Concord



**WORSHIP IN PERSON -or- ONLINE**  
[christelca.org/online](http://christelca.org/online)



# Poinsettias

Purchase poinsettia plants in memory or honor of loved ones  
to adorn our worship spaces at Christ Providence and  
Christ Concord on Christmas Eve.

**\$12 EACH • ORDERS DUE BY DECEMBER 15 • PURCHASE IN REALM**





# 2022 HOLIDAY SCHEDULE

*Save the Dates*

## CHRISTMAS EVE Saturday, December 24

### **Christ Providence**

10:00 a.m. Family Service  
3:00 p.m. Contemporary  
6:00 p.m. Traditional  
8:00 p.m. Contemporary  
10:00 p.m. Traditional

### **Christ Concord**

3:00 p.m. Christmas Eve for Children & Families  
6:00 p.m. Christmas Eve Candlelight Communion

### **Christ South**

5:00 p.m. at Polo Ridge Elementary

## CHRISTMAS DAY Sunday, December 25

### **Christ Providence**

10:00 a.m. in the Sanctuary

### **Christ Concord**

10:00 a.m. Cozy Casual Christmas Morning

## NEW YEAR'S DAY Sunday, January 1, 2023

### **Christ Providence**

10:00 a.m. in the Sanctuary

### **Christ Concord**

10:00 a.m. New Year, New You



**WORSHIP IN PERSON -or- ONLINE!**  
**[christelca.org/online](http://christelca.org/online)**





# CHRISTMAS SHOPPING

## Family Sponsorship Event

*'Tis the Season!*

The Holidays are quickly approaching and that means it's time to start thinking about Christmas! The Christmas Shopping Event will take place over several days again this year. Many families in our community need our help. With the help of benevolence money and individual monetary donations, we will sponsor over 30 families this Christmas season!! The Christmas spirit will be STRONG! This Christmas, the actual shopping will take place over several days leading up to December 2.

Families and/or small groups can "Adopt a Family" and purchase their wish list items during this time and then drop them off at Christ Providence beginning December 2. From December 3-5, parents of the sponsored families will have an opportunity to come to Christ Providence and wrap their families' Christmas gifts from the wish list items purchased and organized.

### **There are several ways to get involved with this wonderful ministry! Members can:**

- Be a personal shopper for a family and deliver to Christ Providence December 2 or as scheduled.
- Donate new items (or gently used items).
- Support this ministry with monetary donations.
- Administrative help
- Advanced shopping for items needed.
- Sponsor a family. Contact Amy Daniels at [adaniels@christelca.org](mailto:adaniels@christelca.org)

- Assist families with wrapping their gifts December 3 - 5.

### **Donations accepted include:**

- New board games
- Game systems (new or refurbished)
- New books, toys, minority baby dolls
- New clothing, coats
- New or used bikes and scooters
- Wrapping paper, tissue, boxes, tags, tape, scissors
- Yard sale items

### **Household goods accepted:**

- Paper towels, toilet tissue
- Shampoo, conditioner
- Hand/dish soap
- Laundry detergent, dryer sheets
- Kitchen utensils, place settings, silverware
- Cleaning supplies
- Towels, washcloths
- Toothbrushes, toothpaste, floss
- Pots and pans

Get into the Christmas spirit of giving at the big Christmas Shopping Event! *The joy of sharing gives a special feeling to the one giving at Christmas!* Contact Amy Daniels ([adaniels@christelca.org](mailto:adaniels@christelca.org)) or Angela Davis ([adavis@christelca.org](mailto:adavis@christelca.org)) for information and to sign up!





**XPERIENCE**  
**Christmas Show**  
**December 9 & 10 • 6:00 p.m.**  
 at Christ Providence (Sanctuary)  
 -FREE ADMISSION-

CHILDREN'S CHRISTMAS PROGRAM




**ANGELS Say What?!**  
**Sunday, December 11**  
**10:00 a.m. & 5:00 p.m.**  
 at Christ Providence (Pit)

CHARLOTTE CONCERT BAND presents  
**"A Holiday Celebration"**  
**Saturday, December 17**  
**4-6 p.m. at Christ Providence (Sanctuary)**




Come celebrate the season with musical favorites the whole family will enjoy!  
**TICKETS & INFO:**  
[charlotteconcertband.org](http://charlotteconcertband.org)

**Stepping Stones**  
 CONFIRMATION



**Apostles' Creed Event**  
**Sunday, November 20 • 1-3 p.m.**  
 at Christ Providence (Forum)

6th Graders will explore the Apostles' Creed & what its 3 articles say about our faith. 7th/8th graders who have not yet attended are also invited. **Register in REALM**



SAVE THE DATE



MIDDLE & HIGH SCHOOL YOUTH  
**Christmas Party**  
**Sunday, December 18**  
 5 p.m. at Christ Providence (Pit)

# ALTERNATIVE GIFT MARKET

**Coming Soon!**

**Sunday, December 4**  
**9:30 a.m. - 12:30 p.m. at Christ Providence**

The Upper and Lower Commons at Christ Providence will be transformed to teach you about issues around the world and true third-world problems in which we can make a difference with your donations in honor of someone you appreciate/love.

You can receive cards explaining the project(s) you support and use them as Christmas gifts to family, teachers, neighbors, etc.... Our projects this year are connected through Samaritan's Purse, Lutheran World Relief, and our own Afghan Refugee Family Support Team and McPIE.

Cornerstone Gifts will host a SERRV shop just outside of the gift store. There you can purchase tangible gifts made in third-world countries for a sustainable wage. These are gifts you can be proud to give.

Stay tuned to social media and E-News for video updates describing the alternative gift projects. You can continue to shop through December 14 and pick up cards by Sunday, December 18 to give to help explain your gifts.

Please support our efforts to support agencies and our brothers and sisters throughout the world.







## Family Night is BACK!!!

Finally, after far too long off, Family Night has returned this Fall for a FULL semester – the first time since Fall of 2019! Students and volunteers have been eager to reunite and Registration Night kicked-off this semester on September 27th! This night was a tad different than years before as it coincided with McClintock's Curriculum Night. This was a great opportunity to get in front of families who were unfamiliar with us, talk about our programming, and offer them a meal! The gym was full of "job-fair" style tables where club leaders showcased their clubs.

This coming semester, we are offering three afternoon clubs – Tennis, Trailblazers and Get Creative. During evening programming, middle school students can choose from 11 clubs. These include Chess, Cyber Security, Outdoor Adventure, Sketch Squad, Sports Drills, Top Scot Chef, Woodworking and MORE! Adults and siblings are also enjoying classes and activities! Our youngest participants have a nursery, activities and crafts, and robotics through You Can Tech! Adult classes include Getting Ahead, Women's Journey, Let's Race, ESL, and Foresight 20/20.

While we have only met for three weeks (as of this writing), our Meals Team has already served 596 meals! School supplies are being distributed and families are being greeted by an amazing team of greeters while checking in.

McPIE has a great team and we are excited to see what this FULL semester has to offer! If you ever consider volunteering for a great, fun cause, please don't hesitate to reach out. The worst that can happen is you build a strong relationship with a student and with fellow volunteers! For info on volunteering, contact Angela Davis ([adavis@christelca.org](mailto:adavis@christelca.org)).

## McPIE Daytime Opportunities

Can't commit to nighttime volunteering? We have several ways to get involved during the day!

**McClintock Tutors:** Tutors are needed at McClintock Middle School; the class sizes are large this year! There are many opportunities to assist small groups of students in the classroom. Occasionally, tutors may be asked to provide additional assistance to a small group outside of the classroom. Tutors are matched to teachers based on preference of subject, grade and schedule. Tutoring at McClintock is much appreciated and is rewarding for the tutor as well as being beneficial for the student! Contact Celia Owen for more information ([cwoven92@gmail.com](mailto:cwoven92@gmail.com)).

**Teacher Appreciation Luncheons:** On early release days (and occasional teacher workdays), McPIE serves lunch to McClintock teachers and staff. Help prepare food and/or serve by connecting with Alice McRorie ([alicermcorie@gmail.com](mailto:alicermcorie@gmail.com)).

**Teacher Partners:** Now more than EVER, teachers need to feel loved, supported and appreciated. Partner with a first- or second-year teacher and remind them how important they are with simple hello emails, notes dropped in their school mailbox, or small tokens of appreciation. Contact Diane to partner ([Diane.gavarkavich@gmail.com](mailto:gavarkavich@gmail.com)).

**Copy Crew:** a good way to volunteer an hour or two each week (or every other if there's enough volunteers). Copying helps McClintock's amazing teachers by saving them time. Don't worry if you don't know how to make copies, training will be provided! Copies can be made any time of day. Contact Jill Tan ([jillgtan@gmail.com](mailto:jillgtan@gmail.com)).



# CHAT TEAM

## VOLUNTEERS NEEDED

We need help chatting with our online worshippers! Duties include welcoming viewers and sharing important links to Facebook and YouTube livestreams.

 **CHRIST online** Email Alexis for more info!  
[awilliams@christelca.org](mailto:awilliams@christelca.org)


## MIDDLE SCHOOL GATHERING

# FUSION

**Sunday, November 6**  
**6:00-7:30 p.m. at Christ Providence (Pit)**

All 6th - 8th graders are invited. Just show up. Friends welcome! \$5 at the door.  
**More info: [jsatterfield@christelca.org](mailto:jsatterfield@christelca.org)**

## Stepping Stones

 CONFIRMATION

### World Religions

**Sunday, November 13 • 1-3 p.m.**  
**at Christ Providence (Fellowship Hall)**

8th graders will study Buddhism, Hinduism, Judaism & Islam and compare these religions to Christianity. A parent is expected to attend with their youth. **Register in REALM**



## HIGH SCHOOL

# DINNER & DEVOTIONS

**Sunday, November 20**  
**6:00 - 7:30 p.m.**  
**at Christ Providence (Pit)**

Info: [jsatterfield@christelca.org](mailto:jsatterfield@christelca.org)

## Coffee with the Pastors

**Wednesdays • 9:00 a.m.**  
**at Christ Providence (W150) -or- Online (Zoom)**

 **christelca.org/online**



## CROP Walk – Thank You To All Who Walked and/or Donated!

This year's CROP Hunger Walk was uptown, and in person! Christ Lutheran raised over \$21,000 dollars and is listed as the top team fundraiser! Thank you to all who have donated and to our group who walked to end hunger! If have not donated to support this important cause, you can continue to donate by going here: [events.crophungerwalk.org/2022/team/christ-lutheran-church-2](https://events.crophungerwalk.org/2022/team/christ-lutheran-church-2).

## Room In The Inn Starts December 1st

CLC will start our 26th year hosting Room in the Inn on Thursday, December 1st. Room in the Inn is sponsored by Roof Above and runs from December thru March. Each Thursday at Christ Providence we host six of our neighbors experiencing homelessness. We provide transportation from uptown, a room they have all to themselves (a rarity in this program!) dinner and fellowship, a warm bed, a shower, a hot breakfast, bag lunch, clothing needs (gloves, hats, underwear) and a ride back uptown. We need volunteers for each of the following:

- Making lunches. One person can make six lunches.
- Set up beds and serve dinner. This is great for families or anyone for that matter. Usually 3-5 people.
- Overnight hosts (2). Overnight hosts arrive Thursday at 7 p.m., stay overnight and depart when guests depart Friday morning around 6:15 a.m. **This is our biggest need, please give it a try - simple and rewarding.**
- Drivers to transport guests from uptown in the evening and back uptown in the morning. On Thursday, drivers leave Christ Providence at 4:45 p.m. for 5:15 pickup uptown. On Friday morning, arrive at church at 5:50 a.m. for transport back uptown. Drivers require a CDL to drive our bus. One driver for each pickup.

If you would like to sign up for any of the above opportunities, please use our Signup Genius for Christ Lutheran Room in the Inn 2022-23. Search by email ([ckramer@christelca.org](mailto:ckramer@christelca.org)) or click here: [signupgenius.com/go/60b0a4babae292-room](https://signupgenius.com/go/60b0a4babae292-room).





## Our Afghan Refugee Asst. Team is Working Hard

Earlier this summer, Amy Daniels connected with a representative from FORCLT. Also known as "For Charlotte," this non-profit organization is really a network of Charlotte area churches that strive to unite the greater Church for city transformation. Since its founding, FORCLT has operated as a neutral convening platform, bringing together pastors and Christian leaders to connect and engage the most pressing physical, spiritual and societal needs of our city.

This led to the creation of our church's Afghan Refugee Assistance Team. Over the summer, our team has been working with an area leader from FORCLT to identify an Afghan family looking for support. We recently were thrilled to make the acquaintance of the Osmani Family.

Our team leads, Chris Youse and Kathie Wilson, have visited with the family twice now. Elizabeth Marquardt joined them with her infant on the second visit. The father is a hardworking and caring man who worked with the U.S. Embassy in Afghanistan. His wife is pregnant with their third child and due in late November. She has a diagnosis that makes her unable to work. Their 5-year-old daughter and 3-year-old son are both very healthy and happy. The oldest is on scholarship at a private Islamic school in the 28215 Zip Code.

The family has been in this country and Charlotte for two years living in a small 1-bedroom apartment. The father is supporting them with an \$18/hour job which has been very flexible and supportive of his caretaker responsibilities. This family provides survival funds for four families back in Afghanistan who are unable to work while the Taliban is in control. They are in danger because of the father's work aiding Americans.

## Priority Needs

### Baby and Household Needs

This is something we can help with IMMEDIATELY. We would like to deliver a basket of gifts and gift cards before or shortly after the baby is born. Needs include:

- Baby swing: Bioby Baby Swing for Infants
- Small crib or pack-n-play
- Bedding for pack-n-play
- Disposable diapers, formula, bottles, etc.
- Baby towels and toiletries for the bath
- Baby blankets
- Baby/diaper tote bag for mom
- Baby bath tub
- New baby clothes (size 3 months), bibs, newborn hats
- Sleep sack (swaddling)
- Walmart gift cards

### Needs for Mother

- Warm clothes (size Medium), laundry soap
- Kotex/pads, disposable nursing pads, lanolin

For your convenience, we have also created an online registry. Find it here: [walmart.com/registry/BR/c4681706-6669-46d8-9855-d739f1e2123c](https://walmart.com/registry/BR/c4681706-6669-46d8-9855-d739f1e2123c).

### Housing Needs

The family would benefit from a larger apartment, mobile home, or rent-to-own situation. They would like to be in or near the 28215 Zip Code because of school, doctors, etc... Because of other financial priorities for family and income, amount available for rent is limited. They now pay \$850/month.

### Citizenship & Helping Other Family Members Get to U.S.

We are researching how to sponsor other family members to enter the U.S. While anxious to become U.S. citizens, this family's visas require they live here for five years before they can begin the citizenship process.

### Mom's Health Situation & Potential Disability Claim

## How You Can Help:

- Please pray for the Osmani family and this team's discernment and wisdom.
- Donate gift cards (Halal Market, Walmart, gas cards, etc.) or items from the wish list above. Drop off donations to the Outreach Office during the first two weeks of November.
- Happen to own or rent and have relationships that could help with the housing situation? Or have you been wanting to find a way to help the affordable housing crisis in Charlotte? Reach out to Amy Daniels at [adaniels@christelca.org](mailto:adaniels@christelca.org).
- Support the Alternative Gift Market (AGM) in early December. The Afghan Refugee Assistance Team will be sponsoring one of the projects.
- Make monetary donations via Realm's Online Giving. Select "Afghan Family Asst." as the fund. [onrealm.org/christelca/give/now](https://onrealm.org/christelca/give/now)





## ROOM IN THE INN

Starting December 1st, Christ Providence will be hosting our neighbors in need.

**Overnight hosts, drivers and other volunteers needed**



Info & Signup:  
[Signupgenius.com](http://Signupgenius.com)

## McPIE Family Support Team

Our Family Support Team helps provide, pack, hand out, or deliver grocery bags and fresh produce in season to identified families within the McClintock and surrounding community. In the early years of McPIE (2007 - 2020) we helped keep a pantry at the school stocked, handed out Thanksgiving meals and helped specific families on an as-need basis.

During COVID this team truly transformed and began organizing and handing out groceries weekly. The truth is that families that struggle to earn a living wage are greatly helped by a few groceries and some produce anytime. While families come and go on our list, we have a consistent number of families that are blessed by a recipe, some groceries, and/or paper products, etc... This team would love to expand, especially if you are interested in helping hand out groceries on a couple Wednesday mornings each month.

If you would like to get involved, please contact Lisa Heirigs at [lheirigs@christelca.org](mailto:lheirigs@christelca.org).

## Crisis Assistance Free Store Needs a New Leader

The Crisis Assistance Free Store, located near uptown, offers clothing, shoes and household items free of charge to people in Mecklenburg County. Christ Lutheran has been involved with this ministry for several decades. Once a month, from September through May, our volunteer group meets at the Providence campus to carpool to the store's location. For about 2 hours, from 9-11 a.m., our volunteers work to inspect and process donated items for the Free Store.

Christ Lutheran helps run the Crisis Assistance Free Store on the 2nd Tuesday of each month. We are in need of a new coordinator/leader. If you are interested in this once per month volunteer opportunity, please email Angela Davis ([adavis@christelca.org](mailto:adavis@christelca.org)).

## Foster Care Support

by Amy Daniels

Do you know how many foster children and youth are in Mecklenburg County? Do you know that Charlotte is one of three hubs for receiving unaccompanied minors for a period of two weeks to four months before they can be united with existing family somewhere in the country? Transitional care is needed for them. Do you know how large the gap is to have certified foster and transitional care homes for all of them?

Surprise: If every church in the county could find, encourage and support one foster family, the need could be met!!! Plan now to be present in worship on November 13. We will be participating in a nationwide STAND Sunday. You will be able to learn more about how we can support foster care in Mecklenburg County. Support can involve supporting the efforts of social workers in the foster system through a program called SocialLite. Support might mean becoming a mentor for a foster youth, or being trained to do Transitional Foster Care for unaccompanied minors, or to become a foster parent.

If you are already involved, I would love to hear from you and learn how our congregation can support you and how your story might inspire others. Email Amy Daniels at [adaniels@christelca.org](mailto:adaniels@christelca.org).

**WE'RE ALL** *Together*  
IN THIS



NEXT BLOOD DRIVE:

**Sunday, November 20**

8:30a - 12:30p at Christ South  
(Polo Ridge Elementary)

Signup at [redcrossblood.org](http://redcrossblood.org)

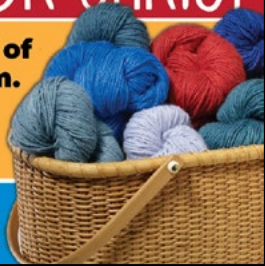
-SMALL GROUP-

**KNITTERS FOR CHRIST**

meets the 3rd Sunday of  
each month • 10:00 a.m.

at Christ Providence  
(Cornerstone Cafe)

**ALL KNITTERS &  
CROCHETERS WELCOME**



HELP FUND A  
SERVICE PROJECT WITH

**thrivent**

*Action Teams*

**For more information:**

Dee Dee Petronis ([dpetronis@christelca.org](mailto:dpetronis@christelca.org))



## Daytime Opportunities

### Teacher Partners

Support new teachers by sending a note/email once per month to offer encouragement and prayers.  
[diane.gavarkavich@gmail.com](mailto:diane.gavarkavich@gmail.com)

### Tutors

Help with small group or one-on-one tutoring once needs are identified by McClintock.  
[cwown92@gmail.com](mailto:cwown92@gmail.com)

**For more info or to signup, please contact the email provided.**





# CHRIST LUTHERAN

providence | south | concord | online

4519 Providence Road • Charlotte, NC 28226

Non-Profit Org.

U.S. Postage

PAID

Charlotte, NC

Permit No. 1741

return service requested

CHRIST LUTHERAN'S BI-MONTHLY NEWSLETTER

## Christ Connections



november/december 2022

Scott Suskovic • Senior Pastor  
Ryan Ritzmann • Pastor, Christ South  
Alexis Williams • Minister, Christ Online  
Amy Daniels • Director of Outreach  
Mark Johanson • Minister of Music  
Gregg Huether • Director of Property and Finance

### JOIN THE NEWSLETTER MAILING LIST

E-mail Connie Kramer at [ckramer@christelca.org](mailto:ckramer@christelca.org) and let her know you'd like a hard copy of Christ Connections mailed to your home. You can also view the online, interactive version at [christelca.org/latest-news](http://christelca.org/latest-news)

CONTENT DEADLINES FOR 2022 EDITIONS

Jan/Feb - December 10 Mar/April - February 15 May/June - April 15  
July/Aug - June 15 Sept/Oct - August 10 Nov/Dec - October 15

\*Submit stories or other news items at [christelca.org/jotform](http://christelca.org/jotform)

JOIN OUR

## Usher & Greeter Teams



We are looking for volunteers to serve as ushers and greeters for Traditional and Contemporary worship at Providence.

**If interested in joining either of these teams, contact Mary Parker:**  
[mparker@christelca.org](mailto:mparker@christelca.org)

## Watch Past Services on our YouTube Channel

Featuring recent sermons, worship videos, ChristKidsTV episodes, promo videos & more!



YouTube



Christ Lutheran Charlotte