

Christ Connections



november/december 2024



SUNDAY SCHEDULE

- 8:45 a.m. **Traditional Worship**
- 10:00 a.m. **The Bridge Service**
- 11:00 a.m. **Contemporary Worship**
- 10-10:45 a.m. **Sunday School**




 For links to live-stream services, upcoming virtual events, bulletins, ChristKidsTV and more:
christelca.org/online

CONNECT ON SOCIAL MEDIA



ALTERNATIVE GIFT MARKET

2024 HOLIDAY SCHEDULE

Save the Dates





PASTOR SCOTT SUSKOVIC

Hurricane Donations: Novant Matthews

When Melissa Nau asked if we could ask for some donations to help displaced pregnant women from the Asheville area to give birth at Novant Matthews, she had no idea of the response. As a Labor and Delivery nurse, Melissa knew first hand the needs of mothers and children during those high intense times of giving birth. What she didn't know was the outpouring and generosity of the good people of Christ Lutheran.

We announced the need for diapers, wipes, pads, clothing, bottles, etc. on Sunday, October 6, and gave people only one week to come back the following Sunday. The outpouring was explosive! One woman in the congregation was so excited, she said, "I went over to Target and bought a thousand dollars of items from the list!"

When Melissa came back that next week, October 13, she was overwhelmed with the amount of donations. It filled her suburban up to the top with all seats down – three times! When she brought them to the hospital, her co-workers were speechless and thrilled with the response.

Who will they go to? Melissa told me about one couple from the Asheville area in their early 40s expecting their first child. She was at 39 weeks when the hurricane came, giving them minutes to evacuate as the water and the mud damaged their house. They made it to Novant Matthews in time, giving birth to a healthy baby, but had nothing to care for mom or baby. As the staff presented her with everything she needed, she broke down in tears, so grateful for the outpouring of donations to help her family cope for the next couple of weeks as they figure out next steps.

Christ Lutheran was by far the greatest single organization that stepped up to help this one small facet of this huge hurricane disaster. But for those 25 plus families who had to flee while about to give birth, it was a life-saving game changer for them.

I have seen this so many times at this wonderful church. When we ask, the response is overwhelming. Whether it is for a capital campaign or a refugee family or to support the youth or be the one to step up and help Novant Matthews, we are consistent in our generosity and outpouring of love.

You made me proud, Christ Lutheran! Your love for those in need reflects the heart of Jesus. And on behalf of those moms and children whom you will probably never meet, they say, "Thank you for helping when we needed it most."

I Love This Church!
Pastor Scott

2024 Church Council

- Eric Runge
President
- Jessica Shurley
Vice President
- David Brown
Treasurer
- Melissa Lanoue
Secretary
- Cassie Thompson
- Chad Melton
- David Herran
- Greg Twait
- Holly Cannon
- Janet Wilson
- Molly Zmuda
- Lauren Ratcliffe



Dates to Know

Sunday School

ends December 15 • resumes January 5, 2025

Wednesdays Ablaze

ends December 18 • resumes January 8, 2025



Christmas Concert Sunday

December 15

8:45 a.m. & 11:00 a.m.

Celebrate Christmas with special music presented by our adult and children's music ensembles during Traditional and Contemporary services. Our liturgical dancers will offer their praises in the Contemporary service.

not choir

meets on last Thursday of each month
11:45am • Christ Providence (coffee area)

Not much of a singer? Join Not Choir, our monthly music appreciation small group, as we listen to & discuss traditional & contemporary worship music. Bring your lunch.

MORE INFO: mjohanson@christelca.org

Decorating for Christmas

Many helpers are needed to decorate our campus for Christmas. Tasks include assembling/decorating trees, hanging wreaths & more. Ability to climb ladders is a plus, but all skill levels are welcome, as are families with children.

SETUP Saturday, November 30 (8:30am)

TEARDOWN Friday, January 10 (8:30am)

No RSVP Needed • Just Show Up!
Tall ladders also appreciated!

MORE INFO: mjohanson@christelca.org

-SMALL GROUP-

KNITTERS FOR CHRIST

meets the 3rd Sunday of each month • 10:00 a.m.

at Christ Providence
(Cornerstone Cafe)

ALL KNITTERS &
CROCHETERS WELCOME



Advent Sermon Series: GOD WITH US

The overarching story throughout the Bible is that this God has come to dwell with us. Instead of living on a remote mountain that we must climb, instead of hiding in an abyss that we must descend, our God is one that seeks to know us intimately, to walk with us daily and to be with us.

November 10 • EDEN: The Way This Ought To Be

Before there was the fall into sin, life was... shalom. More than just the absence of war, shalom refers to a peace that was meant to be. This peace included an intimacy with Adam and Eve and all of creation. It was perfect... until it wasn't. —Genesis 2:4b-9, 18-23; Romans 5:12-21

November 17• WILDERNESS: Along the Way

Shekina refers to dwelling in the presence of the Lord. When the Israelites left Egypt for the Promised Land, God didn't give them a map and a compass and wish them well. His greatest gift was his Shekina, his glory, revealed in a pillar of fire by night and a pillar of cloud by day. —Exodus 13:17-22; 2 Corinthians 4:3-6; Luke 2:8-14

November 24 • TABERNACLE: On the Move

From the time the Israelites left Egypt until Solomon built the first temple, the Ark of the Covenant resided in a tabernacle—literally a portable tent that followed God's people as they remained on the move. No matter where the people lived, God pitched his tent alongside them. —Exodus 39:32-35, 43-40:3, 34-38; John 1:1-5, 14

December 1 • TEMPLE: In the Sacrifice

The use of animal sacrifice lay at the heart of Jewish worship from the time of Abraham, past the life of Jesus until about 70 AD. At its zenith, the greatest expression of this sacrifice was within the Temple located in Jerusalem. Why did it end? There are two answers to that question, depending on if you are Jewish or Christian. —1 Kings 8:62-66; Hebrews 10:1-10; Luke 2:22-24

December 8 • JESUS: Emmanuel

One of the many names of Jesus is Emmanuel, literally, "God is with us." If you want to know about the character of God, look to Jesus. If you want to know the love of God, look to Jesus. If you want to know the grace of God, look to Jesus. For in Jesus, we see the fullness of this God who desires to be with us. —Matthew 1:18-25; Philippians 2:5-11

December 15 • CHURCH: Already and Not Yet

We live in this in between time between the first and the second coming of Jesus. We have received the forgiveness and grace of God already, but not yet have we experienced the fullness of such glory. We live in the time of the Church, God's creation as a proclamation that there will come a time in which God's reign will come into its completion. —Revelation 21:1-5; Matthew 16:13-19

December 22 • HEAVEN: Coming Full Circle

However we define heaven and hell, we can be sure of one thing. Heaven is dwelling forever in the presence of God while hell is an existence apart from God. From the time of the expulsion from the Garden of Eden, it has been God's plan of salvation for his people to come full circle and return into his presence. —Revelation 22:1-5; John 20:19-23

STAY INFORMED ON THE CURRENT SERMON SERIES:
christelca.org/sermon-series

Christmas Gifts for Residents at Trinity Place

"I am writing to express our deepest gratitude for your generous sponsorship of Christmas gifts over the years. Your thoughtful contributions have brought immense joy and warmth to our residents, many of whom do not have family nearby to celebrate with.



The smiles on their faces and the excitement in their eyes as they open gifts are truly heartwarming and a testament to the spirit of giving that your church embodies. The holiday season can be a difficult time for those in nursing homes, but your kindness and generosity made it a

memorable and joyous occasion for everyone here. Your support not only provides beautiful gifts but also reminds our residents they are loved and cherished by the community. We are incredibly grateful for your continued support and for making such a positive impact in the lives of our residents. We look forward to continuing our partnership and making a difference together in the lives of those we serve."

—Tracy Dean, Life Enrichment Director, Trinity Place Albemarle

Thanks to our generous congregation, we were able to provide gifts for 100 residents last year. This year, we will be collecting gifts again for the residents at Trinity Place Albemarle. We will have a table with Christmas wish lists in the Lower Commons starting **Sunday, November 10**. Wrapped gifts are asked to be returned to the Lower Commons by December 9th. Please come by the table or reach out to Mary Parker with any questions (mparker@christelca.org).

OUT & ABOUT -family outings-

by PASTOR RYAN

Out and About is a ministry geared toward families with young children (but not exclusively so). We know that a life in Christ is best lived in community; that's why the Holy Spirit formed the Church. But life is hectic and crazy, especially with children. If you have children, then you know that doing *anything* can sometimes be a whole production. Out and About is an opportunity to be in community with other families but not be tied down.

The events and gatherings are structured in a way that a family can come late or leave early. The goal is to give our kids a time to play and get out and be kids; as well as allow adults to have a breather and other adult company. Let the kids run and join in the fun and fellowship of being Church together.

So far, our outings have been to things like the Matthews Alive Parade & Festival, a Picnic at Colonel Beatty Park and Pumpkin Pickin' at Hall Family Farm. For the latest on our next Out and About Family Outing, stay tuned to our weekly E-News or go to christelca.org/latest-news.

Christmas Shopping for Nursing Home Residents

Last year, we were able to provide gifts for 100 residents at Trinity Place Lutheran Home in Albemarle. Thank you for your support!

We will be helping again this Christmas. Starting **November 10**, stop by the table in the Lower Commons to pick up a resident's name & wishlist. Bring back wrapped gifts by Dec. 9th.

More info: mparker@christelca.org

OUT & ABOUT -family outings-

Stay up-to-date on future outings:
christelca.org/latest-news

or email Pastor Ryan at
rritzmann@christelca.org



Hear the Charlotte Master Chorale and talented area high school singers join forces in a vibrant choral collaboration featuring André Thomas' Mass: A Celebration of Love & Joy.

Saturday, March 8, 2025
4:00 p.m. in the Sanctuary


Charlotte Master Chorale

TICKETS & INFO:
charlottemasterchorale.ticketspice.com/celebration-of-joy



Thursday Morning Women's Bible Study

meets weekly from 10 a.m. - 12 p.m.
at Christ Providence (Forum A&B)

For Info: julia.edelson@gmail.com



Quilters FOR CHRIST

Wednesdays • 9:30 a.m. to 12:00 p.m.
at Christ Providence (Center Six)

If you can not make the Wednesday mornings, you can still be part of this ministry by cutting out or sewing squares at home. No experience necessary.

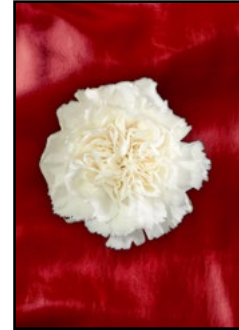
MORE INFO:
[Lois Witham \(lowitham@carolina.rr.com\)](mailto:lowitham@carolina.rr.com)

Honoring Our Loved Ones

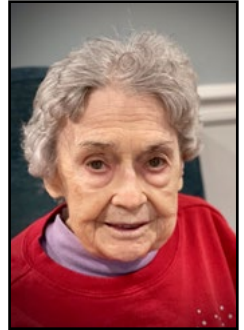
All Saints' Sunday is the time we set aside to remember all those who have passed on before us. Join in the remembrance of our loved ones with a lighting of a candle at this special service.

All Saints Sunday
November 3, 2024

Members of Christ Lutheran that have passed since last year's All Saints Day include:



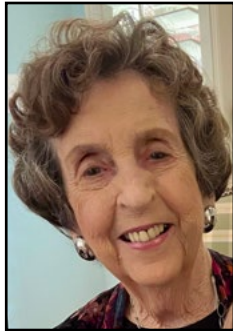
Charlie White



Phyllis Chapman



Hal Anderson



Nancy Arnall



Sue Bell



Carl Fisher



Kathryn Grace
Brydon



Irma Runge



Lorna Coloccia



Arlene Dallman



Annie Hamilton



Gene King



Sarah Marsh



Dan Mille



Tommy Paul



Terry Payton



Al Rhodes



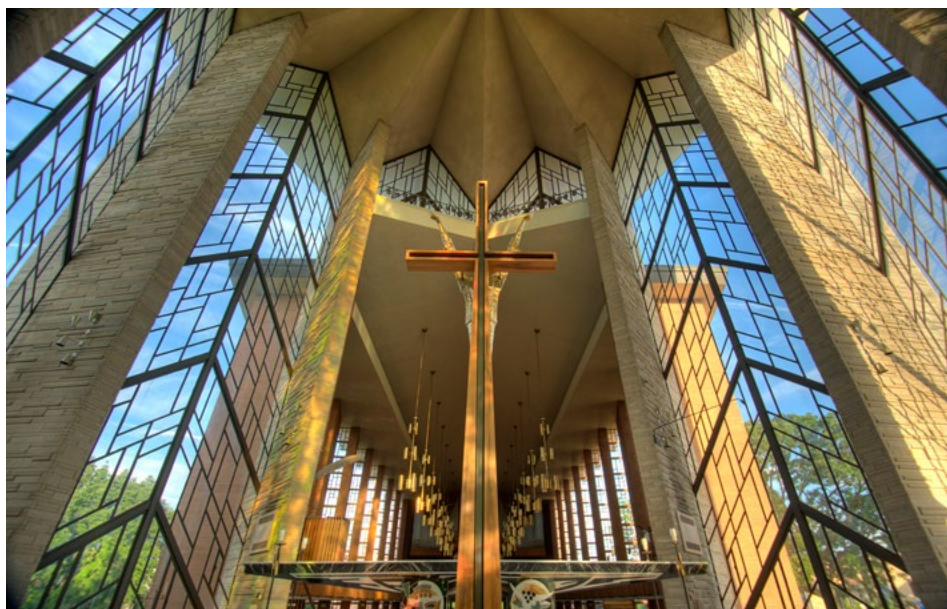
Hans Teich



Saralyn Summer



Janet Voelker



Prayers on the Ceiling

by MARK JOHANSON

In mid-October, I had the opportunity to travel up to Valparaiso University, my alma mater, to sing in a choir celebrating the university's centennial of Lutheran affiliation, and the quincentenary of the first Lutheran hymnal ever published. It was a delightful experience during Valpo's homecoming weekend that not only gave me the opportunity to sing, as well as make some professional connections, but also to benefit personally from simply being in the glorious Chapel of the Resurrection, one of the most distinctive collegiate chapels in the world. The choir was made up of students and alumni, ranging in age from recent graduates to alumni from the 1960s. It was a great reminder of the legacy that Valpo has had on the greater Lutheran Church over these past 100 years.

You may, like I do, have that one place where you feel closest to God. Perhaps it's church, a retreat center or church camp, or the beach, but regardless of where it might be, it's a place where you know you will always feel just a little bit closer to God. For me, that place is the Chapel of the Resurrection at Valparaiso University. Every time I enter that space, I find myself feeling overcome with a sense of awe and quiet. In that space, I enjoy singing and praising God with music even more than I might ordinarily. Over the four years of my time as an undergrad, and even now as an alumni, during the countless worship services and concerts I sang, played and attended in that space, I often would pause to consider how many voices of the faithful had sung and prayed in that space before I had. On one occasion, I even wondered what it would look like if all the prayers and songs which had been offered up over the years were to get caught in the ceiling on their way up. How powerful it would be to see all those prayers on the ceiling!

When young people – whether they're college students at Valpo or children at Christ Lutheran Church – see adults participating in worship and singing praises to God, it has an immeasurable and profound effect on their

faith development. These young people look up to their elders. They see what their parents, grandparents and those of that same generation are doing. Psychologists call this "behavior modeling," where people learn new behaviors by observing and imitating others.

And yet, the voice of doubt can trick us into thinking that our praises aren't worthy in the sight of God. Those voices make us think we'd do better to leave the singing to the choir, or worse, only to paid professionals. If you are older in years, those voices might make you feel embarrassed to sing because you had a better voice when you were younger. If you've been told you can't sing, those voices might make you remain silent while the congregation is singing.

As your minister of music, I consider it my job to encourage and equip the congregation for success in its worship and praise of God, especially as it relates to music. I'd like to provide four thoughts of encouragement from my personal perspective as it relates to this topic.

- As a ministry leader at Christ Lutheran, I want voices of all ages represented in music and worship; no one is too old or too young to praise God.
- If you are a younger person, sing boldly! Moreover, if you are a teenager who feels pressured by your peers to not sing, be strong and keep singing anyway. Speaking specifically to teenage boys, don't stop singing just because your voice is changing!
- As a fellow worshipper on Sunday mornings, I feel the presence of the Holy Spirit when I hear and see God's praises being offered by someone who is older than I am. You still have a musical gift to offer even if you feel your voice isn't what it once was; perhaps more importantly, your singing is a witness to others who need to be encouraged.
- As a father of two young children, I want all children to be surrounded by adults who demonstrate worship participation in the same way that it was demonstrated for me when I was a child: every adult in the congregation is part of worship, and children do not care if you sing off-key, but they do notice when you do not sing at all.

If the prayers of the faithful were to stick to the ceiling of Christ Lutheran, the visual reminder of the presence of the faithful who have gone before us would be overwhelming. Since we don't have the benefit of seeing every praise and prayer that has been lifted to God, you and I must continue to be positive role models of the faith to those who go on after us, and our regular participation in worship is one of the best ways to accomplish this.

Thank you for continuing to work together for the sake of the Gospel. You are a blessing to me!

GATHERED IN PRAYER

Do you have the desire to lift others & our community up in prayer? Do you often wish you had taken the time to pray for those on the back of the bulletin?

Come join us every Wednesday morning 8 a.m. in the Worship Parlor

MORE INFO:
D'Linda Highum (206) 310-6037

Centering Prayer

Are you searching for a few moments to be still & meet God in silent prayer?

Join us 2nd & 4th Mondays at noon in the Worship Parlor

MORE INFO:
Laura Tang (Lttang@earthlink.net)

Third THURSDAY

for adults of all ages

November 21

11:45 a.m. - 1:30 p.m. in Fellowship Hall

Join us for lunch & a Thanksgiving pie-making class! Ingredients will be provided for different fruit pies along with disposable pans. Bake your pie at church or take home to bake later.

\$15 • Click/Scan to Register>>
MORE INFO: awallace@christelca.org

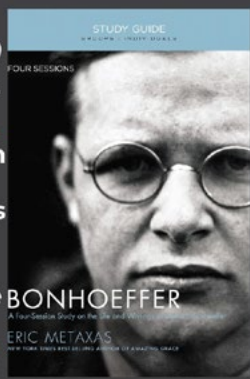


ADULT SUNDAY SCHOOL CLASS

Faith Fellowship
Sundays • 10-10:45 a.m.
Forum A&B -or- Online (Zoom)

Starting Oct. 27, we'll begin a 4-week video study of Bonhoeffer's major themes influencing the faith community during WWII Germany & how they continue to impact us today.

ZOOM: christelca.org/online



BONHOEFFER
ERIC METAXAS

INTRODUCING WEDNESDAYS ABLAZE

DINNER
5:00-6:15 p.m.
\$8 adult • \$6 child

CLASSES
6:00-7:30 p.m.
find schedule online

For dinner RSVPs & classes:
christelca.org/wednesdays-ablaze



Welcome Our New Members!



Jenny, Ryan, Ellie, Erik, Vincent and Viktor Ramanujam



Heather, David, Emma, Zach and Abby Nelson



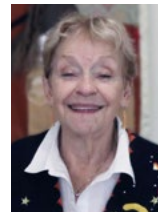
Dirk Selland, Henry D. Urrutia-Selland, Cameron and Caleb Selland



Kate, Ben and Jackson Brown



Shannon and Mitch Boraski



Lynn Sims



Charlene Shipman



Stephanie Linchuck



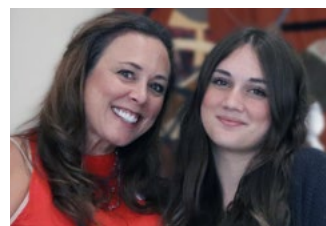
Savannah Blue



Chris, Tabitha, Madyson, Kaiden and Logan Stine



Glenn Martin and Bobbi Newsham



Jessie Bartolomeo and Mackenzie Mingle

NO PICTURE
Mary Jane and Mac King



Join us for

THANKSGIVING

WORSHIP

Wednesday, November 27

5:00 p.m. Special Dinner in Fellowship Hall

Cost: \$10 adults • \$7 kids
(RSVP required in REALM by Nov. 24)
no Wednesdays Ablaze Classes

6:30 p.m. Thanksgiving Worship

in the Sanctuary & Online

WORSHIP IN PERSON -or- ONLINE
christelca.org/online   



Poinsettias

Help us adorn the Sanctuary and Christ Chapel with poinsettias for the celebration of Christmas. Purchased plants can be donated in memory or in honor of a loved one and may be taken home following the Sunday, December 29 worship service.

\$15 EACH • ORDERS DUE BY DECEMBER 16



Scan/Click to Order
or go to <https://t.ly/sNAAA>



Coming



Soon!

ALTERNATIVE GIFT MARKET

On **Sunday, November 24** from 9:30 a.m. - 12:30 p.m., the Lower Commons at Christ Providence will be transformed into a festive marketplace by our Middle and High School Youth and Outreach groups. Come learn about causes from all around the world and “shop.” Choose causes you would like to support and make donations in honor of someone you appreciate/love. You will receive cards explaining the

project(s) you supported and use them as Christmas gifts to family, teachers, neighbors, etc. These are gifts you can be proud to give. Stay tuned to social media and E-News for updates. You can continue to shop online through December 4 and pick up cards by Sunday, December 15. **Please help our efforts to support our brothers and sisters throughout the world.**



2024



HOLIDAY WORSHIP SCHEDULE

CHRISTMAS EVE
Tuesday, December 24

- 10:00 a.m. Family Service (Sanctuary) ^
- 3:00 p.m. Contemporary Christmas Eve (Sanctuary) 🛒 🗣️
- 5:00 p.m. Traditional Christmas Eve (Sanctuary) 🛒 🗣️
- 7:00 p.m. Contemporary Christmas Eve (Sanctuary)
- 9:00 p.m. Traditional Worship (Christ Chapel) ^

Sunday, December 29
10:00 a.m. One Service (Sanctuary)



^ IN PERSON ONLY
 nursery available (0-35 months)
 children's message

WORSHIP IN PERSON -or- ONLINE
christelca.org/online



XPERIENCE Christmas Show

GET READY FOR THE Xperience Christmas Show!

Hey everyone! Mark your calendars for an awesome night at the Xperience Christmas Show on **December 6th & 7th** at 7:15 p.m. in the Sanctuary. This event is open to all—so grab your parents, siblings, friends, and anyone else who wants to join in on the fun! Plus, there's going to be a hot chocolate bar and delicious treats to snack on, creating the perfect cozy vibe for the season.

This year's show offers a hilarious twist on the classic nativity story, presented in the fun style of a 90s sitcom. Get ready for a mix of laughs and heartfelt moments as our talented high school Xperience crew brings the story of Mary and Joseph to life like never before. They've been working hard since September, and you won't want to miss what they've created!

Come out and support our students as they showcase their creativity and talent! The Xperience Christmas Show is a great opportunity to celebrate the joy of the holidays together. If you have any questions, hit up Bill Porter (bporter@christelca.org) or Shelby Johns (sjohns@christelca.org).

We can't wait to see you there for a night full of laughter, warmth, and holiday spirit!





CHRISTMAS SHOPPING

Family Sponsorship Event

December 13-16

'Tis the Season! The Holidays are quickly approaching and that means it's time to start thinking about Christmas! Many families in our community need our help. With the help of benevolence money and individual monetary donations, we will sponsor over 30 families this Christmas season!! The Christmas spirit will be STRONG! This Christmas, the actual shopping will take place over several days leading up to December 13. Families and/or small groups can "Adopt a Family" and purchase their wish list items during this time and then drop them off at Christ Providence beginning **December 13**. From **December 14-16**, parents of the sponsored families will have an opportunity to come to Christ Providence and wrap their families' Christmas gifts from the wish list items purchased and organized.

There are several ways to get involved with this wonderful ministry! Members can:

- Be a personal shopper for a family and deliver to Christ Providence Dec. 13 or as scheduled.
- Donate new items (or gently used items).
- Support this ministry with monetary donations.
- Sponsor a family. Contact Amy Daniels at adaniels@christelca.org
- Administrative help
- Assist with set up and helping families with wrapping their gifts December 13-16.
- Advanced shopping for items needed.

Donations accepted include:

- New board games
- Game systems (new or refurbished)
- New books, toys, minority baby dolls
- New clothing, coats
- New bikes and scooters
- Wrapping paper, tissue, boxes, tags, tape, scissors
- Yard sale (gently used) items

Household goods accepted:

- Paper towels, toilet tissue
- Shampoo, conditioner
- Hand/dish soap
- Laundry detergent, dryer sheets
- Kitchen utensils, place settings, silverware
- Cleaning supplies
- Towels, washcloths
- Toothbrushes, toothpaste, floss
- Pots and pans

Get into the Christmas spirit of giving at the big Christmas Shopping Event! *The joy of sharing gives a special feeling to the one giving at Christmas!*

Contact Amy Daniels (adaniels@christelca.org) or Angela Davis (adavis@christelca.org) for information and to sign up!



Charlotte Rescue Mission is our newer relationship. They welcome 4-6 volunteers every first Monday of the month from 3:30 – 6:00 p.m. Volunteers must be at least 15 years old. They have a brand new facility uptown on 1st Street. They ask that volunteers sign up at least 48 hours in advance (so by Saturday before volunteering on Monday). Melinda Dale and Libby Jackson coordinate this ministry. You can contact Melinda for a link to sign up at melinda28226@hotmail.com or call (704)277-0868.

Our Benevolence Team sends \$1,000 each quarter to sponsor these meals at Charlotte Rescue Mission. Almost every month a member does a Thrivent Action Team to sponsor the Soup Kitchen and Liza does the shopping for that meal.

CROP Walk Thank you

A big thank you goes out to our CROP Walk heroes. No, we are not talking about our walkers. Rather, we mean our donors who went online or gave checks or cash to support our CROP team. Some walked at Memorial Stadium while our youth group walked in the Lansdowne neighborhood close to the church. Christ Lutheran has raised over \$20,000 thus far, the leading team again this year. Thanks again to all those who fought hunger and made a difference.

Meals as Ministry

Did you know that Christ Lutheran sponsors a meal every single month at The Roof Above Soup Kitchen AND at Charlotte Rescue Mission Rebound Center? Liza Hack orchestrates a meal at the Soup Kitchen. She has been there ever since she was a child. Her mom was in charge for over 2 decades and Liza took over for her. The Soup Kitchen prefers fewer volunteers than they used to allow, and so Liza and her fiancée and a friend or two handle it every month. This is actually a nice arrangement because they have deep relationships with the homeless community because of their consistent service.



Feed A Family Continues Because of You!

Geez! Groceries are expensive!! I have changed how I shop because of higher grocery prices, and you most likely have too! Wages are not keeping pace with inflation even though inflation has slowed to a rate we haven't seen since February 2021. I just wish the grocery stores would stop raising prices!

Feed A Family helps families of McClintock Middle School one grocery bag at a time. We also have the gardeners providing fresh produce each week. The families are so happy to receive fresh tomatoes, collards, peppers and herbs! This year we are averaging 35 bags each week, by the end of the year that will likely tick upward. We work with the school social worker and serve the most vulnerable families.



Thank you for contributing to Feed A Family! We couldn't provide groceries for these families without you!



DAYTIME OPPORTUNITY: McClintock Tutors

McPIE
McClintock Partners In Education

Volunteers needed to help tutor students needing extra help at McClintock Middle School.

Contact Susan Brackett if interested in volunteering:
sbrackett@carolina.rr.com



CHARLOTTE RESCUE MISSION SUPPER

1st Monday of each month • 3-6 p.m.

4-8 volunteers are needed each month to cook and serve dinner for CRM's Rebound program (907 W 1st St). Great for individuals or a small group!

To volunteer yourself or a group, text or call Melinda Dale: 704-277-0868 (each participant will need to fill out a form)



CHARLOTTE
RESCUE
MISSION



Rebound
Men's Addiction Recovery Center



ROOM IN THE INN

Christ Providence will be hosting our neighbors in need this winter through A Roof Above.

Signups coming soon!!

MORE INFO:

Randy Satterfield or Lane Goode
(rpsatterfield@carolina.rr.com)
(lane.goode@gmail.com)



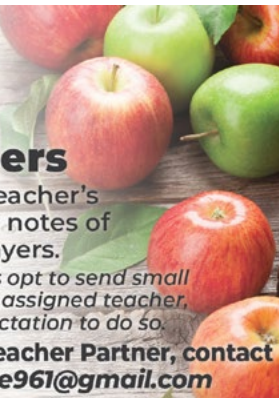
McPIE
McClintock Partners In Education

DAYTIME OPPORTUNITY: Teacher Partners

Brighten a McClintock teacher's day by sending monthly notes of encouragement and prayers.

While some Teacher Partners opt to send small gifts or spend time with their assigned teacher, there is no obligation or expectation to do so.

If you would like to be a Teacher Partner, contact Jeanne Hunt: huntjeanne961@gmail.com



DAYTIME OPPORTUNITY FOR THE FALL: Teacher Luncheons

Support teachers and staff at McClintock Middle School with lunches on early release days. Volunteers needed to prepare dishes as well as help serve.

If you are interested in joining this team, contact Melinda Dale at melinda28226@hotmail.com

McClintock Partners In Education

McPIE

McPIE Family Night Update

Family Night is back and we started strong by building community and energy in the school building!! It was contagious on September 24th during Registration Night. We had a line for dinner, smiles all around and club leaders excited to talk with students and families! This Fall, we have 13 middle school clubs, 4 parent classes, 3 younger sibling offerings and high school opportunities.

Middle School students can participate in the afternoon, evening or both. Afternoon clubs include Trailblazers, Gardening and Get Creative! Evening clubs are a combo of new and old: Art, Computer Building, Girl Scouts (NEW), Hands 2 Heart, Sports Drills, Robotics, Ten80 Racing, Top Scot Chef, Volleyball (NEW) and Woodworking.

Younger sibling classes are led by our dedicated and loving volunteers from CLC. These children, aged newborn through 5th grade, are loved on, learn through play, focus on projects requiring teamwork, and are enjoying arts & crafts, sports and more. High School students are earning volunteer hours by helping leaders in Top Scot Chef, Sports Drills and other clubs as needed.

Parent offerings include Getting Ahead, Women's Journey, ESL and Parent U! We are excited to have Parent U return, but with a twist. We have partnered with CMS Family Academy to better tailor topics to what parents need to navigate CMS and learn about all the resources available within our own school district. Topics include Positive Parent Program, financial wellness, bullying, CMS CTE opportunities and more! ESL continues to be highly attended and parents are on pathways out of poverty in Getting Ahead and Women's Journey!

This is an exciting time for Family Night – watching momentum build, seeing smiles on the faces of volunteers and participants, and the hope of what programming brings to students and families. Our full mission comes to life each and every Tuesday at McClintock! To get involved in this amazing outreach, contact Angela Davis (adavis@christelca.org).



Room in the Inn Starts in December

The Room in the Inn season is right around the corner and will run on Thursday nights, starting December 5th through the end of March. Again, we can really use help for overnight hosts. We need two overnight hosts each Thursday. It's a great opportunity for spouses, men's groups, or any men looking to serve this program. Private room and breakfast included! Also, we could use any drivers with a Commercial license to drive our CLC van-bus.

If you are interested in serving as a RITI coordinator, we are looking for one or two more. Coordinators lead set up and dinner a few Thursdays each season. Contact Lane Goode (lane.goode@gmail.com) if you are interested in helping out with any of these roles.

The sign up page will be available soon, so please keep an eye on E-News or christelca.org/latest-news for updates. Looking forward to another successful RITI season!

Parent's Time Out

by RACHEL DYER

Parents, do you need a break? A chance to spend some time away? A time out? Then mark your calendars for our next Parent's Time Out event on **Friday, December 6th** from 5-7 p.m.! This is a drop-off event for children aged 3 years old through middle school. Kids will start the holiday season with a Polar Express themed event complete with arts, crafts, a hot cocoa bar, as well as a special train-themed surprise. More information and registration will be coming soon, so be on the lookout!

Operation Christmas Child

Our High School students will be collecting items to put together shoe boxes for Operation Christmas Child shoe boxes. Samaritan's Purse sends shoebox gifts to boys and girls living in major cities, dense jungles, arid deserts, war zones, on remote islands and along lofty mountain ranges.

They work closely with local teams to bring these special gifts to children in need — even to hard-to-reach areas where there are few believers or where many have long been hostile to the Gospel of Jesus Christ. Each box, packed full of quality toys, school supplies and personal care items becomes a tangible expression of God's immense love for the child. For many, it is their first gift ever and we could use your help!

We are asking for donations of items to help fill the boxes. Here are some ideas of things to include:

- Monetary donations for postage (it costs about \$10 to ship a box).
- Shoe boxes (cardboard or plastic).
- A "WOW" ITEM: Small backpack or purse, doll • soccer ball and pump, stuffed animal, jewelry making kit, hobby kit, large toy truck or car.
- PERSONAL CARE ITEMS: Toothbrush, washcloth, comb & brush, nail clipper & file, water bottle, flashlight.
- SCHOOL SUPPLIES: Pencils, sharpener & eraser, pencil container, pens, crayons, colored pencils, markers, notebooks, index cards, calculator, scissors, ruler, glue stick, small adhesive tape, drawstring bag.
- CLOTHING & ACCESSORIES: Flip-flops or shoes, sunglasses, hat, wristwatch, costume jewelry, hair accessories, clothing and undergarments, winter cap, scarf, mittens.
- GAMES & ACTIVITIES: Puzzles, coloring books or pads, dry watercolor set, binoculars & compass, musical instruments, chalkboard & chalk, jump rope, stickers, games.
- TOYS: Small ball, building blocks or LEGO® sets, Slinky® or yo-yo, plastic animals, magnets, finger puppets, interactive toys, other small toys and figures.
- *DO NOT INCLUDE* food, candy, gum, toothpaste, used or damaged items, scary or war-related items, wearable traditional camouflage, seeds or organic matter, liquids, medication, money, breakable items, matches, fire starters, aerosol.

Bring items to the bin in front of the Family Ministry Welcome Desk in Lower Commons before December 1st. High School students will be packing boxes and have a chance to work at the Operation Christmas Child Processing Center that prepares all donated boxes for shipping.

MIDDLE SCHOOL
PARENT CONNECTION 

Sunday, November 3
4-6 p.m. in the Forum "Mental Health"

Middle school parents & students are invited to a presentation from psychologist Stephanie Hosford about dealing with issues impacting adolescent mental health & self-image.

Click/Scan to Register >>
MORE INFO: tweller@christelca.org



REALM

HIGH SCHOOL YOUTH

LOCK-IN 

Friday, November 8 (8 p.m.) -
Saturday, November 9 (8 a.m.)
at Christ Providence

Click/Scan to Register
MORE INFO: tweller@christelca.org



REALM

Family
Christmas Eve Service

Special service geared towards families with preschool & elementary-aged children with festive songs, a special message & a craft.

Tuesday, December 24
10:00 a.m. in the Sanctuary

HELP OUR YOUTH FILL SOME SHOEBOXES!

Our high school youth will be filling shoeboxes and they need your help with donations.



Bring items to the bin in front of the Family Ministry Welcome Desk by December 1st.

<<READ ARTICLE FOR GIFT IDEAS!<<

Parent's Time Out
Friday, December 6 • 5-7 p.m.

Children ages 3 - 8th grade are invited to be dropped off for a Polar Express themed event complete with arts, crafts, a hot cocoa bar, as well as a special train-themed surprise.

Registration Coming Soon!
MORE INFO: rdyer@christelca.org

Nursery Assistant
part-time (5-8 hrs. per week)



Seeking a caring and consistent nursery assistant for children aged 6 weeks through 36 months. Responsibilities include providing care on Sunday mornings during Traditional, Bridge and Contemporary worship, as well as some Wednesday and Thursday evenings.

If interested in learning more, contact Rachel Dyer at rdyer@christelca.org

HIGH SCHOOL Lunch

Every Sunday • 12:30-2:00 p.m.

Join us for lunch at Mod Pizza after Contemporary Worship. This will be a time of weekly fellowship and study for all high school students.

MORE INFO: tweller@christelca.org



VIDEOS FILLED WITH SONGS, ACTIVITIES
A WEEKLY LESSON AND MORE!
- for elementary students & younger -

FIND THE PLAYLIST ON OUR
CLC YOUTUBE CHANNEL

UPCOMING
Baptismal Classes

Sunday, November 17
Sunday, December 15

1:00 p.m. on Zoom

For info, email Jane at jsatterfield@christelca.org

CHRIST
online
christelca.org/online

A Partnership for Faith Formation

by PASTOR ADRIENNE

Did you know that we have over 1,000 families in this congregation who have children 18 or under? That is a lot of families! What an amazing blessing! It is one not many congregations can claim.

We are equally blessed to have a wonderful, talented and skilled team of family ministers who are passionate about the faith formation of our children and families. We have programs, events, celebrations and service projects that all aim to support our families and help them grow in their faith journeys and fulfill their baptismal promises to rear their children in the faith.

While we have staff who dedicate their time and energy to this important ministry, I would like to invite us to remember that family ministry is a partnership — a partnership with families as we work together to equip them or their child as a disciple of Jesus Christ — as well as a partnership with the whole congregation to support families as they walk this journey of faith.

This is a mission that thrives when ALL of us are engaged in this ministry. We thrive when you are involved! The word that Family Ministry would like to replace is “VOLUNTEER”, and we would like to replace it with “PARTNER”. Volunteering is wonderful and appreciated, but this ministry requires more. We need partners.

We need partners to help make a bigger impact on the lives of our children and youth. We need partners to build our capacity to serve. We need partners to enrich our programming and community. We need YOUR talents, YOUR skills, YOUR care. This village needs YOU. Even if your kids are grown and even *especially* if your kids are grown, don't let that stop you! We greatly value the wisdom and experience you bring.

We have so many ways you can take part in making an impact. Right now, one of our great needs is help with ChristKids. Consider taking one Sunday out of the month to serve as an extra set of hands during the worship service as we share a special Gospel message with the kids. It is 20 minutes during the service and you can either help lead it or help with crowd control! It is a lot of fun and a great way to be a part of this village. Let us know if you can help. Thank you in advance!

Mark Your Calendar for January: Grandparents Volunteer Luncheon

by PASTOR ADRIENNE

Grandparents, we are calling you! Whether your grandchildren attend Christ Lutheran or live out of state, you are invited to a luncheon in January to explore the ways you can get involved in the faith formation of our youngest members. Faith formation is a partnership, and the Family Ministry Team recognizes that grandparents have an increasingly significant role in the rearing of their grandchildren. We would like to support you and invite you into ministry with us! In our role to help families live into the promises made at baptism, there are so many ways to partner with the Family Ministry Team to make a difference in the lives of our young families. We value the experience and wisdom you bring!

Stay tuned for the date for this luncheon in January! If you have any questions, please reach out to Pastor Adrienne (amartin@christelca.org)



CHRISTLUTHERAN

providence | online

4519 Providence Road · Charlotte, NC 28226

Non-Profit Org.
U.S. Postage
PAID
Charlotte, NC
Permit No. 1741

return service requested

CHRIST LUTHERAN'S BI-MONTHLY NEWSLETTER

Christ Connections



november/december 2024

- Scott Suskovic · Senior Pastor
- Ryan Ritzmann · Pastor, Evangelism & Faith Formation
- Adrienne Martin · Pastor, Family Ministry
- Alexis Williams · Minister, Christ Online
- Amy Daniels · Director of Outreach
- Mark Johanson · Minister of Music
- Tony Hyde · Director of Property and Finance

JOIN THE NEWSLETTER MAILING LIST

In your REALM profile, you can set newsletter mailing preferences to USPS mail or online delivery. Hard copies are available for pickup at each campus. You can also view the online, interactive version at christelca.org/latest-news/newsletter

CONTENT DEADLINES FOR 2025 EDITIONS

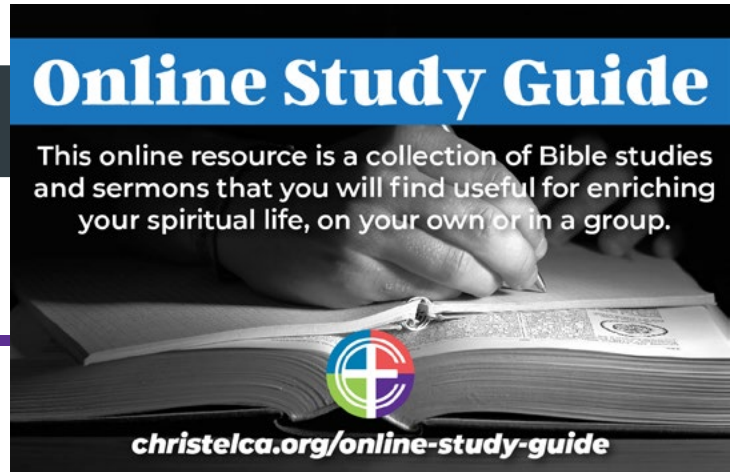
Jan/Feb - December 10 Mar/April - February 15 May/June - April 15

July/Aug - June 15 Sept/Oct - August 10 Nov/Dec - October 15

*Submit stories or other news items at christelca.org/jotform

Online Study Guide

This online resource is a collection of Bible studies and sermons that you will find useful for enriching your spiritual life, on your own or in a group.



christelca.org/online-study-guide

PODCAST IS NOW LIVE!!



Led by Christ Lutheran pastors, Deeper Dive will tackle your big questions about religion & life.

Check it out now >>
christelca.org/podcast

